



seemakrish  
Wallcoverings Lookbook 2024



Seema Krish wallcovering patterns draw from India's rich craft heritage to bring a new dimension to your interior spaces.



Our patterns stand alone and can also be combined with our hand-crafted textiles.

Hand drawn and sold by the yard, our wallcoverings are printed to order in the U.S. and offer endless opportunities for customization.





# KENGERI

Width: 30" (Trims to 27")  
Repeat: 27" H, 24" V  
STANDARD CLAY COATED





SKU# W 12-24 C

LAKE



SKU# W 16-24 C

GARDEN

Kengeri is a lush foliage pattern with artwork inspired by traditional Bhil tribal art. The pattern name comes from a Bangalore neighborhood known as a serene haven for birdwatchers and nature lovers.

Kengeri originates from Seema's interactions with Bhil artists. Bhils are an agricultural tribal community in India; their art is intuitive and derives from their strong ties to nature



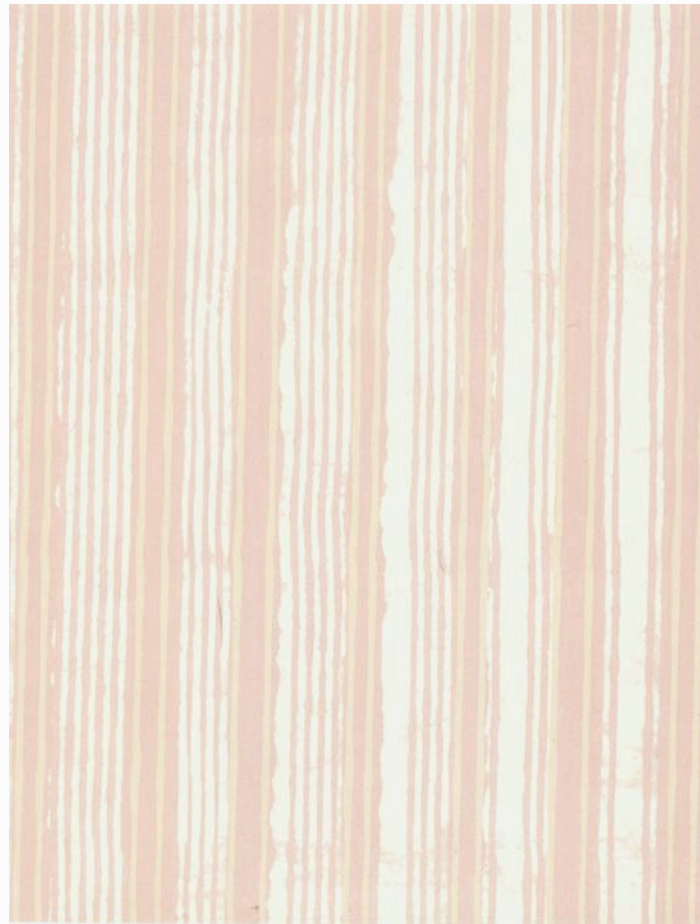


# BELLARY

Width: 30" (Trims to 27")  
Repeat: 27" H, 22" V  
STANDARD CLAY COATED



BELLARY in Rose Pink



SKU# W 23-24 C

ROSE PINK



SKU# W 24-24 C

RAIN



SKU# W 25-24 C

COBBLESTONE

Bellary is inspired by traditional Indian batik stripes, with a hint of wabi-sabi and an appreciation for asymmetry.

It is named after Bellary Road- a major tree-lined road in North Bangalore that is close to Seema's home in the city.





# KAVERI

Width: 30" (Trims to 27")  
Repeat: 27" H, 25.5" V  
STANDARD CLAY COATED



KAVERI in Rain



SKU# W 33-24 C

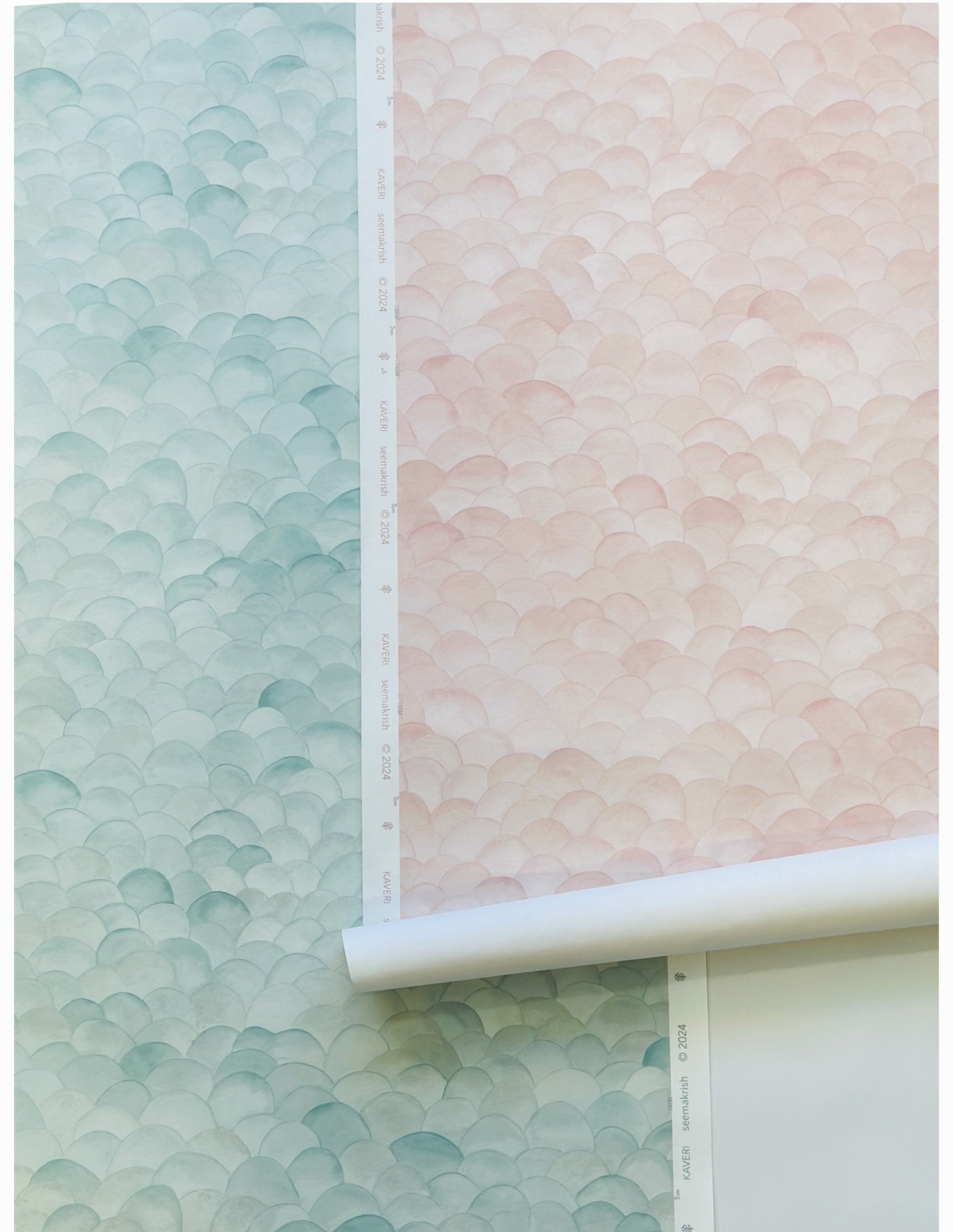
ROSE PINK



SKU# W 34-24 C

RAIN

The water-colored scallops in this pattern ebb and flow like its namesake, the river Kaveri, which runs through the Southern Indian state of Karnataka.







LALBAGH

Width: 36" (Trims to 33")  
Repeat: 33" H, 62.35" V  
PAPERWEAVE



LALBAGH in Neem Green



SKU# W 26-22 P

NEEM GREEN



SKU# W 23-22 P

ROSE PINK



SKU# W 25-22 P

COBBLESTONE

We sampled our Lalbagh pattern on our standard clay-coated paper and a textural paper weave ground. The scales vary as the widths of the papers vary.

We can sample any of our patterns on our five available substrates. We also have three additional grounds that are suitable for contract use.

Reach out to us to learn about our endless custom opportunities.





# LALBAGH

Width: 30" (Trims to 27")  
Repeat: 27" H, 51" V  
STANDARD CLAY COATED



LALBAGH in Jacaranda Lilac



SKU# W 20-22 C

INDIGO



SKU# W 22-22 C

JACARANDA LILAC

Blooms, vines, and seed pods convene in Lalbagh, a delicate, watercolor all-over floral pattern named for a historic botanical garden in Bangalore crowned by an ornate 19th-century glass pavilion.

# Lilac

- 1. **Lalbagh** wallcovering in Jacaranda Lilac
- 2. **Lalbagh** textile in Jacaranda Lilac
- 3. **Surfside** wallcovering in Lilac
- 4. **Central Park** textile in Grand Lilac
- 5. **Juhu** wallcovering in Brinjal Purple
- 6. **Breach Candy** textile in Anjeer Lilac
- 7. **Nandi** wallcovering in Jacaranda Lilac
- 8. **Tanjore** textile in Jacaranda Lilac



1.

2.

3.

seemakrish

8.

7.

seemakrish

seemakrish

6.

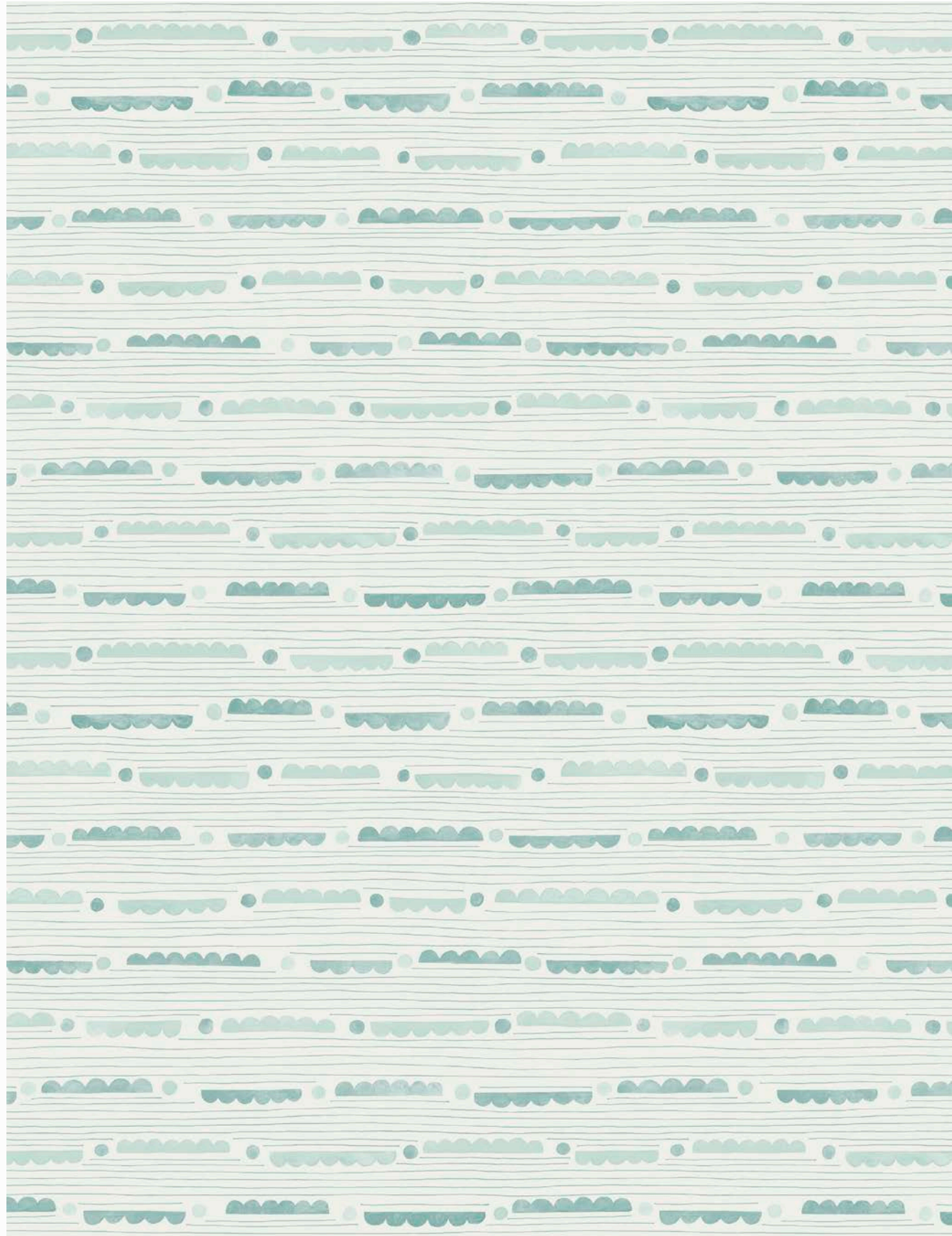
5.

4.

We imagine our wallcoverings being applied in various environments - traditional or contemporary, residential or commercial, and in different rooms- bedrooms, bathrooms, entry, kitchens, etc.

How do you imagine using our wallcoverings in your next project?



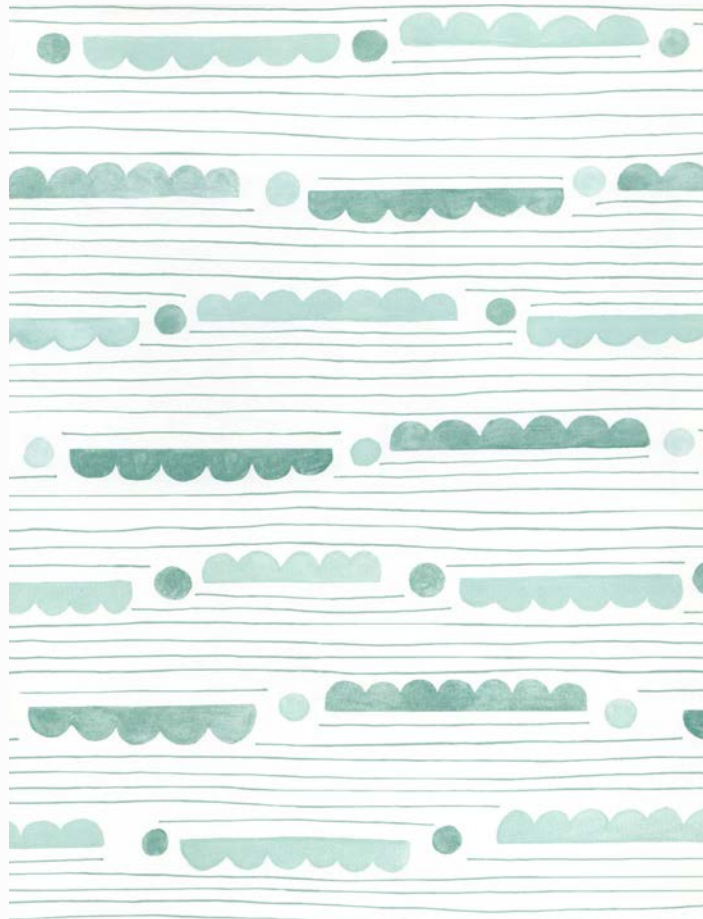


# NANDI

Width: 30" (Trims to 27")  
Repeat: 27" H, 29" V  
STANDARD CLAY COATED PAPER

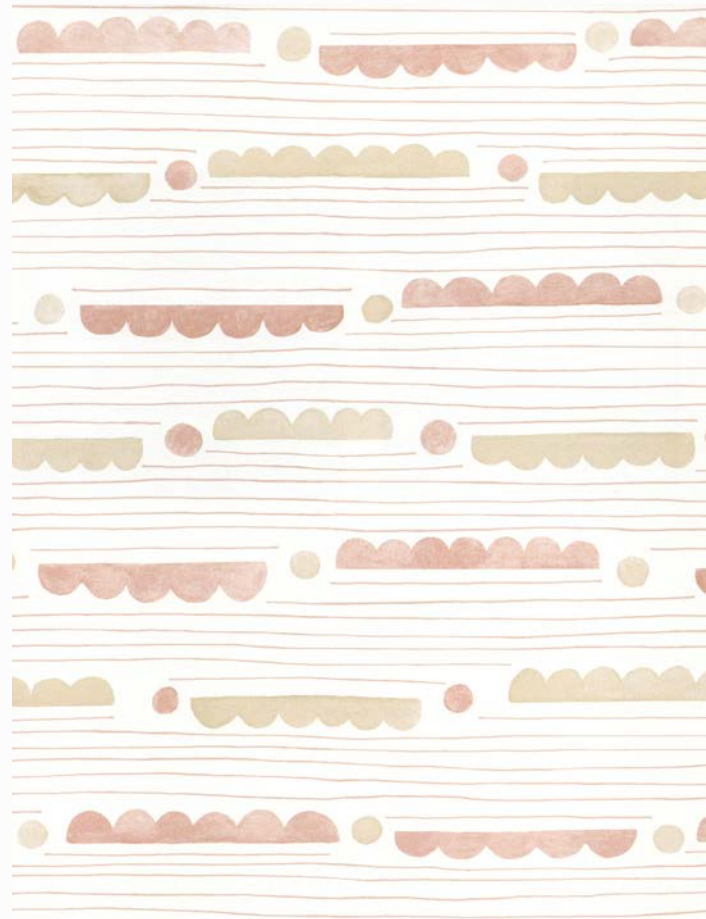


NANDI in Rain



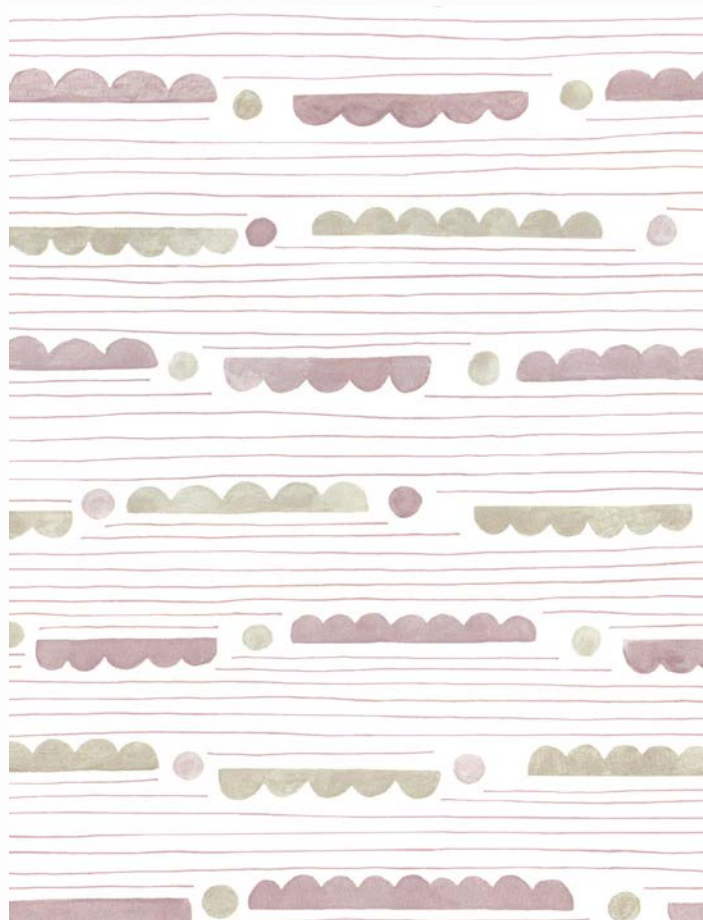
SKU# W 14-22 C

RAIN



SKU# W 13-22 C

ROSE PINK



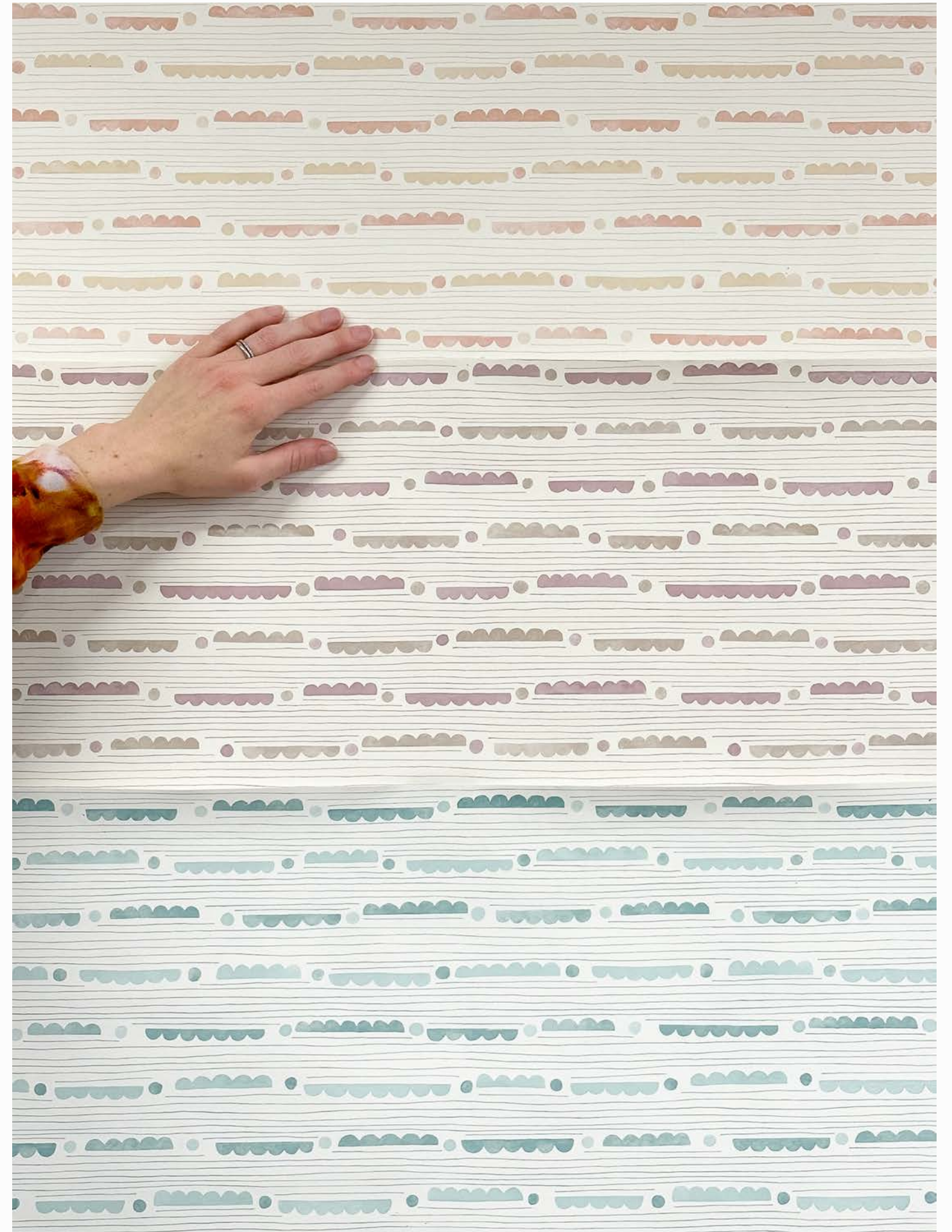
SKU# W 12-22 C

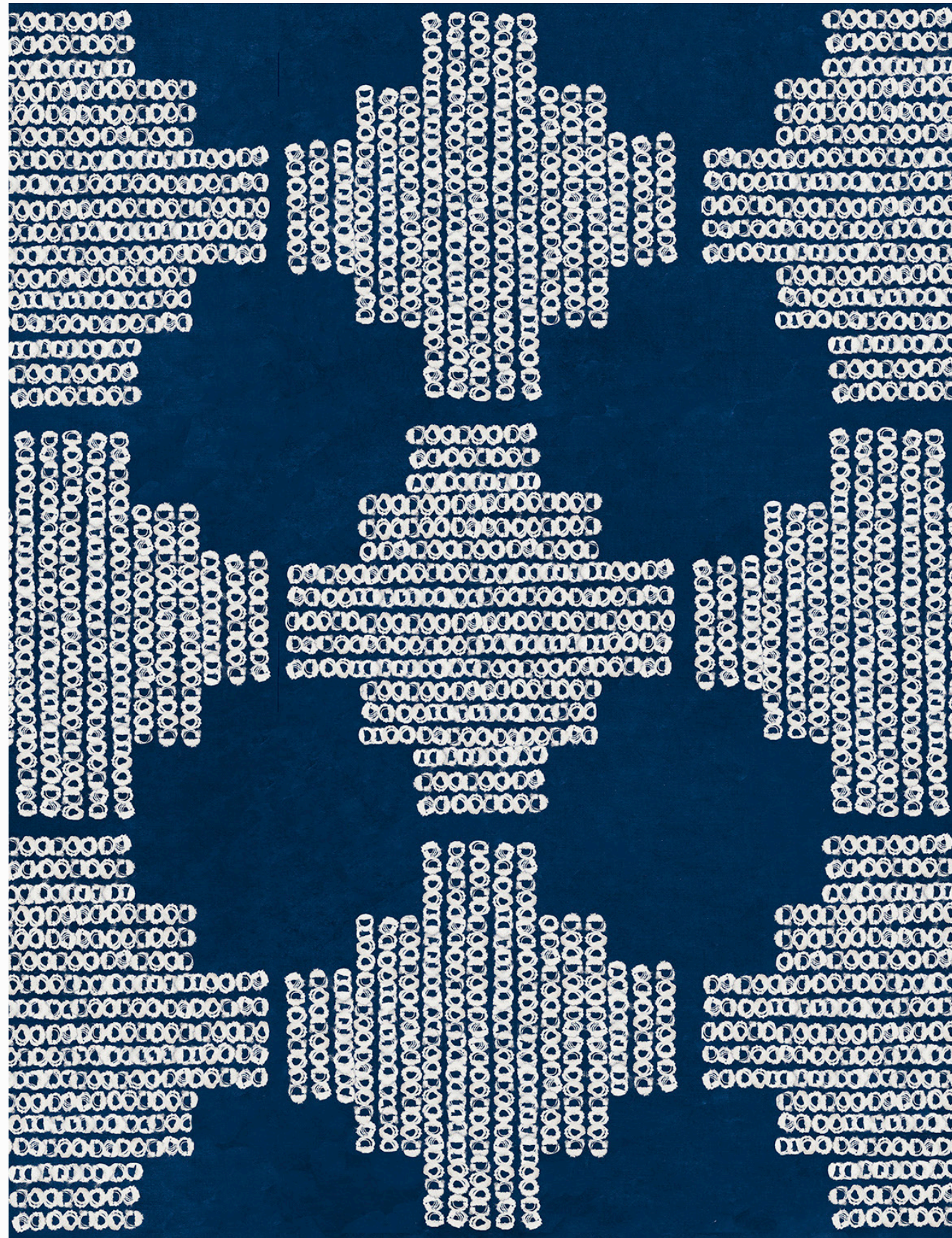
JACARANDA LILAC

Nandi Hills is an ancient hill station that offers sweeping views of Bangalore and houses a 9th century temple dedicated to Nandi – the bull ‘vahana’ or vehicle of the Hindu god Shiva.

Rendered with a watercolor effect, Nandi is a lively all-over stripe.

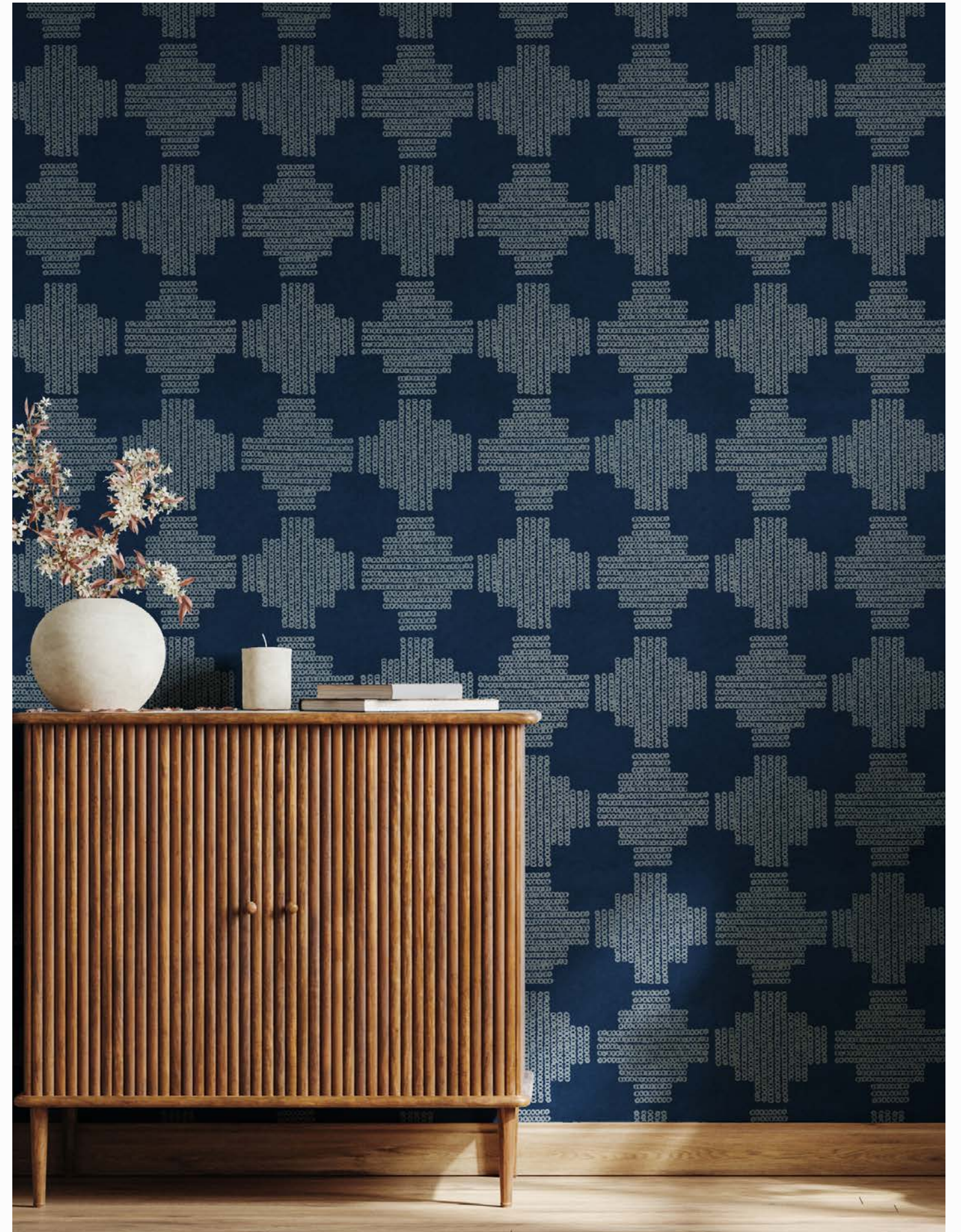
Sampled on FSC-certified clay-coated paper.





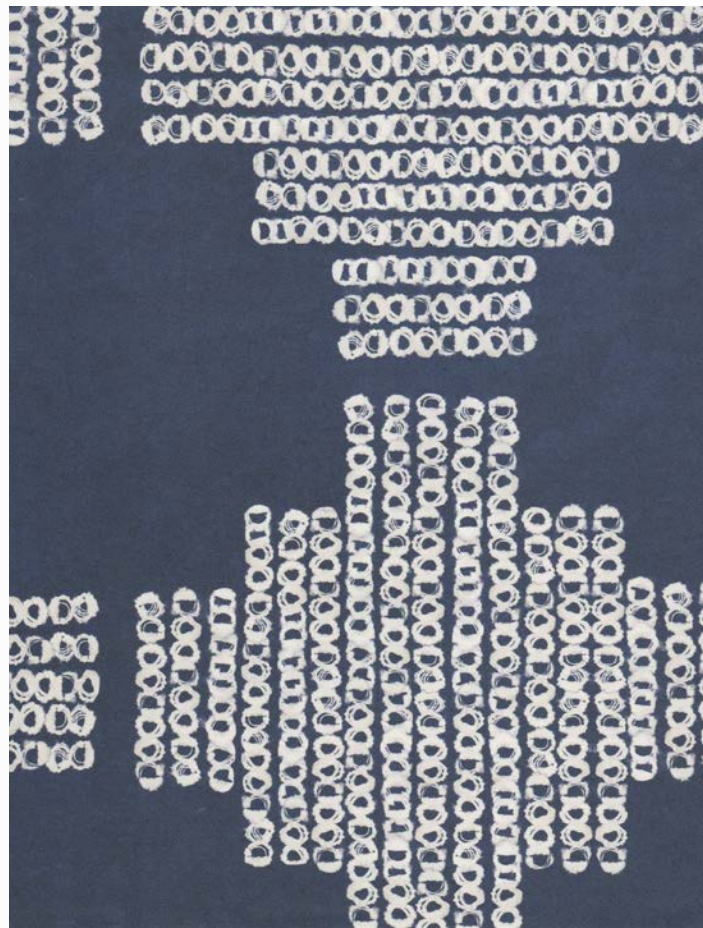
# SUTRO

Width: 30" (Trims to 27")  
Repeat: 27" H, 27" V  
STANDARD CLAY COATED PAPER



SUTRO in Seaport Blue





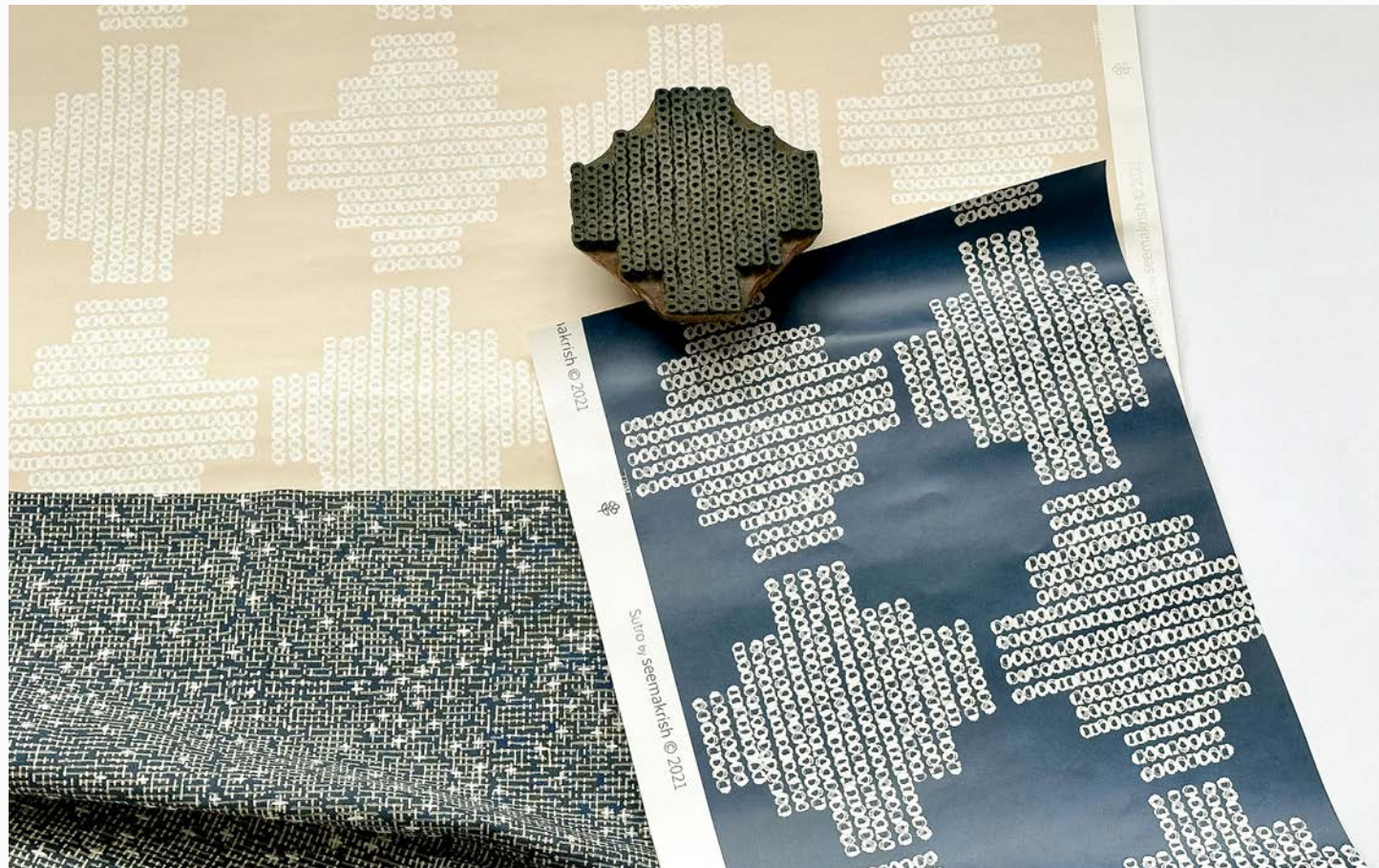
SKU# W 15-21 C

MARINE INDIGO



SKU# W 16-21 C

SAND



PACIFIC in Marine Indigo



SUTRO in Ginkgo Green | DESIGN by JEAN LIU DESIGN

Sutro is inspired by the ancient bandhani technique in which sections of cloth are bound together using tied thread and dyed by hand. Named for a historic landmark in the Lands End area of San Francisco, Sutro is a striking pattern that blends both traditional and modern sensibilities.

Sampled on FSC-certified clay-coated paper.



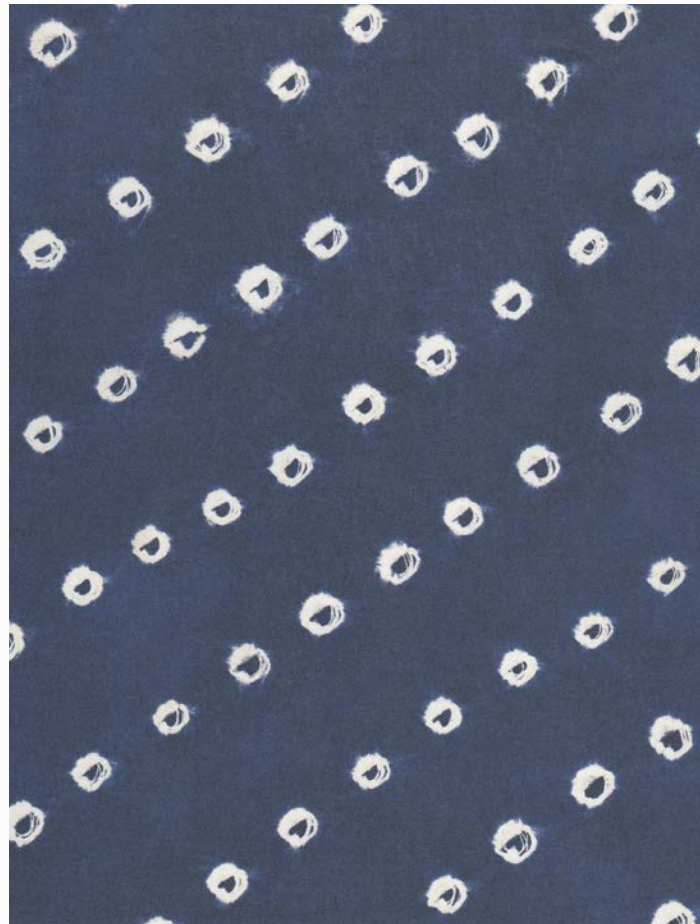


## SURFSIDE

Width: 30" (Trims to 27")  
Repeat: 27" H, 36" V  
STANDARD CLAY COATED PAPER



SURFSIDE in Seaport Blue



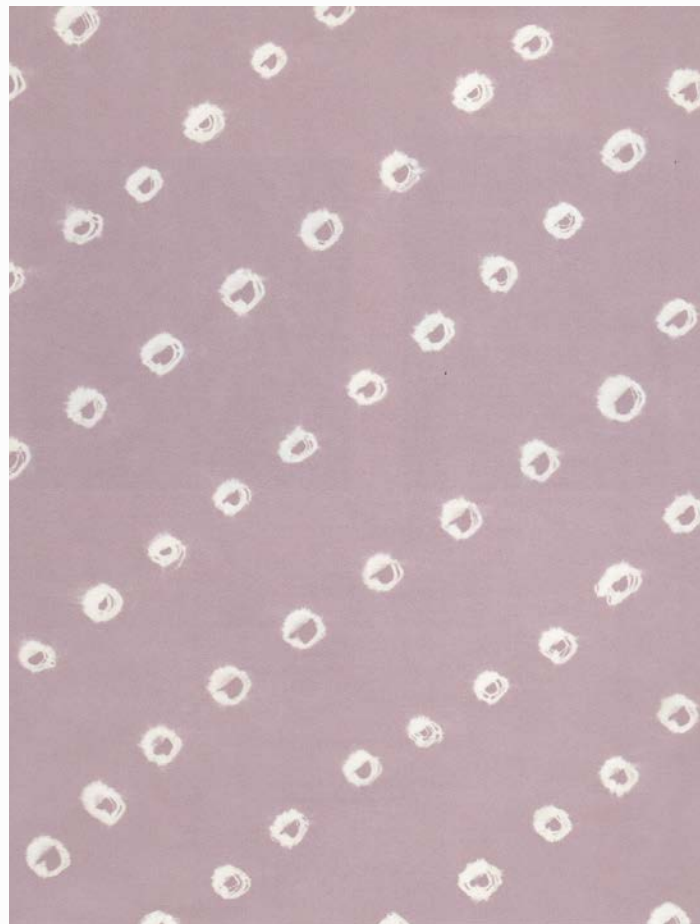
SKU# W 05-21 C

SEAPORT BLUE



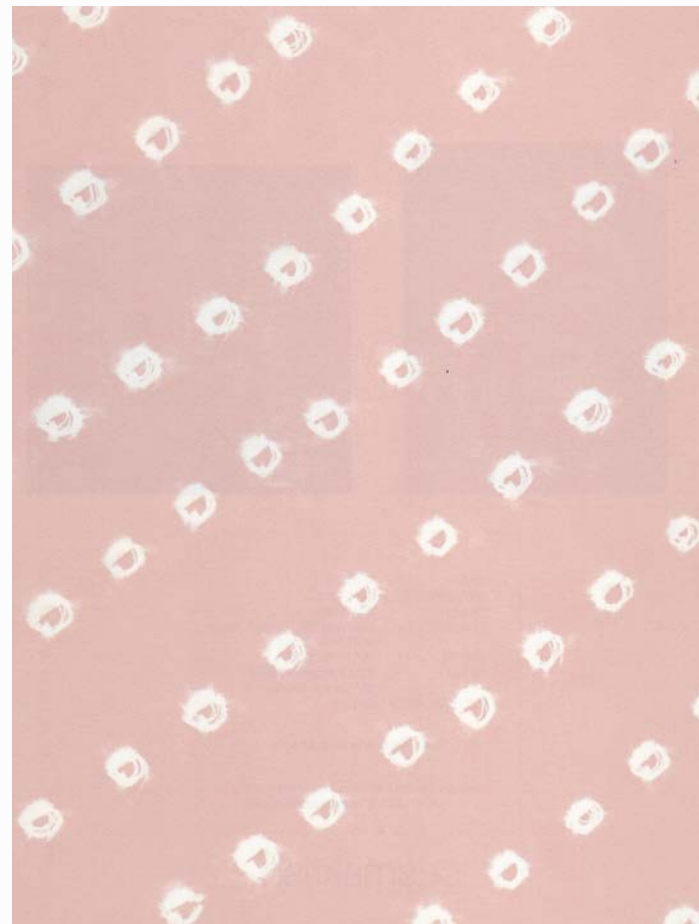
SKU# W 04-21 C

MIST GRAY



SKU# W 03-21 C

LILAC

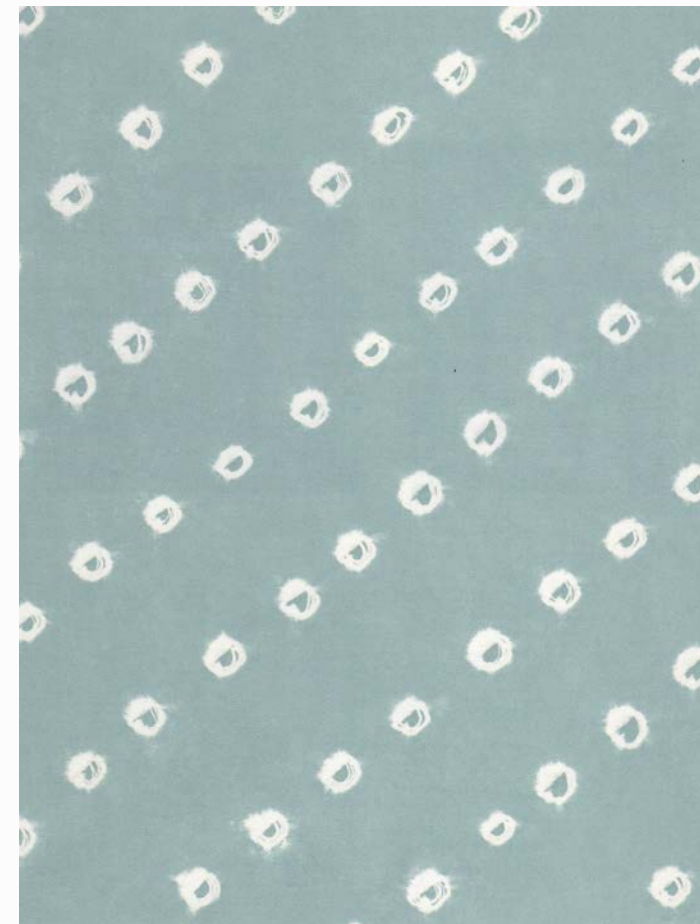


SKU# W 01-21 C

STARFISH



SURFSIDE in Seaglass | DESIGN by LOTUS BLEU



SKU# W 02-21 C

SEAGLASS

Translating the traditional bandhani tie-dye technique into a digitally-printed wallcovering, Surfside's motifs float serenely in a design inspired by the popular beach on the southern shore of Nantucket.

Sampled on FSC-certified clay-coated paper.



# EDGARTOWN

Width: 60" (Trims to 54")  
Repeat: 54" H, 51" V  
STANDARD CLAY COATED PAPER



EDGARTOWN in Seashell I DESIGN by DESIGN ALCHEMY INTERIORS



SKU# W 23-20 C

RANI PINK



SKU# W 25-20 C

SEAPORT BLUE



SKU# W 26-20 C

SEASHELL



SKU# W 22-20 C

TIDE GRAY



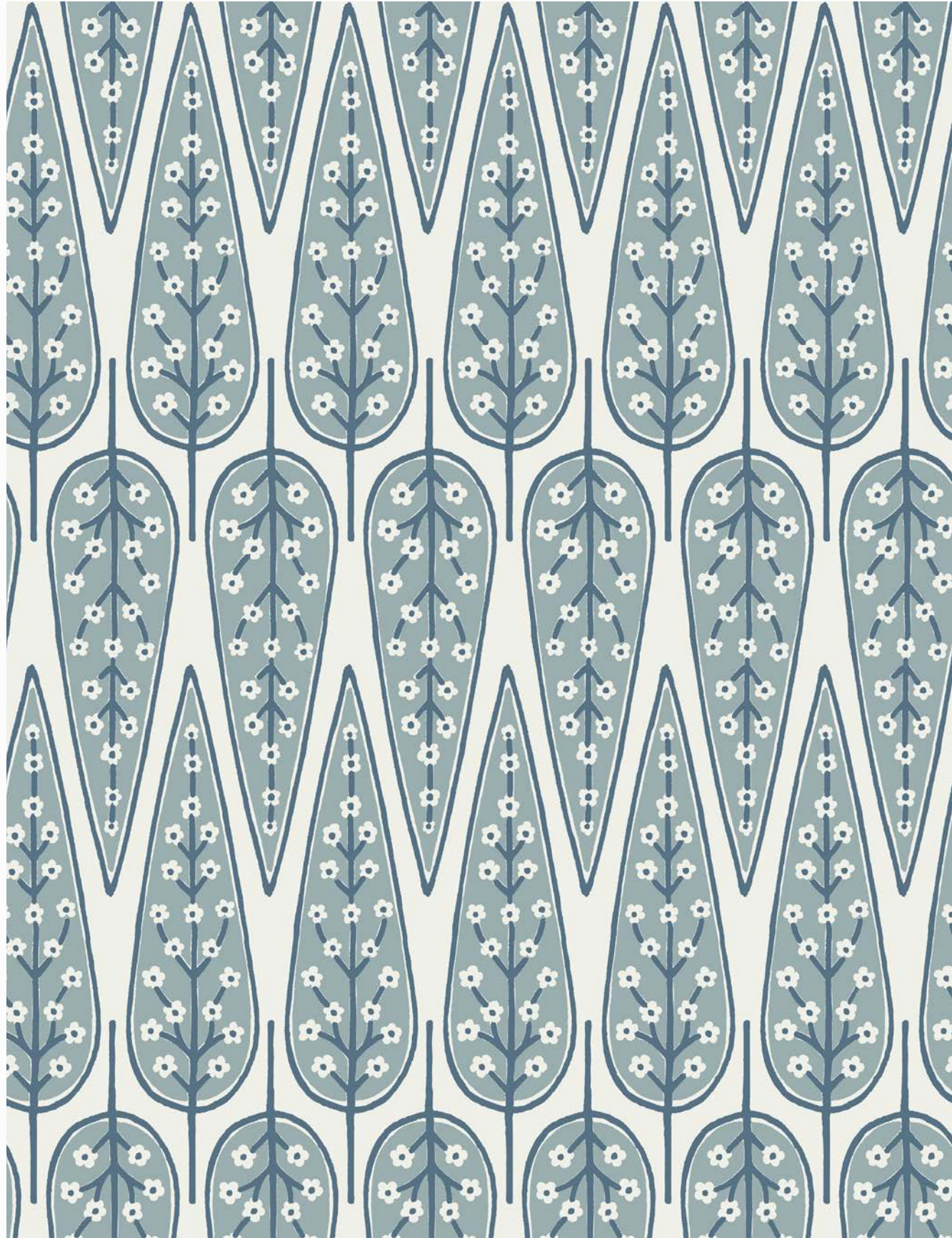
EDGARTOWN in Rani Pink | BREACH CANDY in Rani Pink | MAHALAXMI in Rani Pink



Creeping floral vines and ornate medallions make up Edgartown, a large-scale botanical print named for a town on Martha's Vineyard noted for its historic charm.

Sampled on FSC-certified clay-coated paper.

EDGARTOWN in Rani Pink



# YARMOUTH

Width: 30" (Trims to 27")  
Repeat: 27" H, 22.5" V  
STANDARD CLAY COATED PAPER



YARMOUTH in Cove Blue





SKU# W 10-20 C

COVE BLUE



SKU# W 14-20 C

SAGEBRUSH



SKU# W 16-20 C

SEASHELL



SKU# W 18-20 C

TIDE GRAY

# Blues

1. **Union Square** textile in Hudson Indigo 2. **Juhu** wallcovering in Marine Indigo 3. **Yarmouth** wallcovering in Cove Blue 4. **Sutro** wallcovering in Seaport Blue 5. **Beacon** wallcovering in Cove Blue 6. **Surfside** wallcovering in Seaport Blue 7. **Juhu** textile in Hudson Indigo 8. **Yarmouth** textile in Seaport Blue





YARMOUTH in Sagebrush | EDGARTOWN in Seashell | BEACON in Tide Gray

Yarmouth is a nature-inspired geometric print that celebrates the historic beech trees of this charming beach town in Cape Cod.

Sampled on FSC-certified clay-coated paper.



YARMOUTH in Dune



# BEACON

Width: 30" (Trims to 27")  
Repeat: 27" H, 16.75" V  
STANDARD CLAY COATED PAPER



BEACON in Sagebrush



SKU# W 00-20 C

COVE BLUE



SKU# W 04-20 C

SAGEBRUSH



SKU# W 08-20 C

TIDE GRAY



SKU# W 06-20 C

SEASHELL

Beacon is a painterly geometric, small-scale pattern named for the historic Boston neighborhood whose charm lies in its Federal-style row houses, narrow gaslit streets, and brick sidewalks.

Sampled on FSC-certified clay-coated paper.



BEACON in Cove Blue

Beacon by Seemakrish © 2021



# REYES

Width: 36" (Trims to 33")  
Repeat: 33" H, 39" V  
SISAL GRASSCLOTH



REYES in Badal Gray | JUHU in Badal Gray



SKU# W 30-18 S

BADAL GRAY



SKU# W 33-18 S

ROSÉ



SKU# W 36-18 P

GLITTER GRAPHITE



SKU# W 35-18 S

GINKGO GREEN

# Greens

1. **Larkspur** wallcovering in Ginkgo Green 2. **Beacon** wallcovering in Sagebrush 3. **Yarmouth** wallcovering in Sagebrush 4. **Alta** textile in Ginkgo Green 5. **Pacific** textile in Ginkgo Green 6. **Reyes** wallcovering in Ginkgo Green 7. **Lalbagh** wallcovering in Neem Green 8. **Tanjore** textile in Neem Green



1.

6.

5.

7.

4.

2.

3.

seemakrish

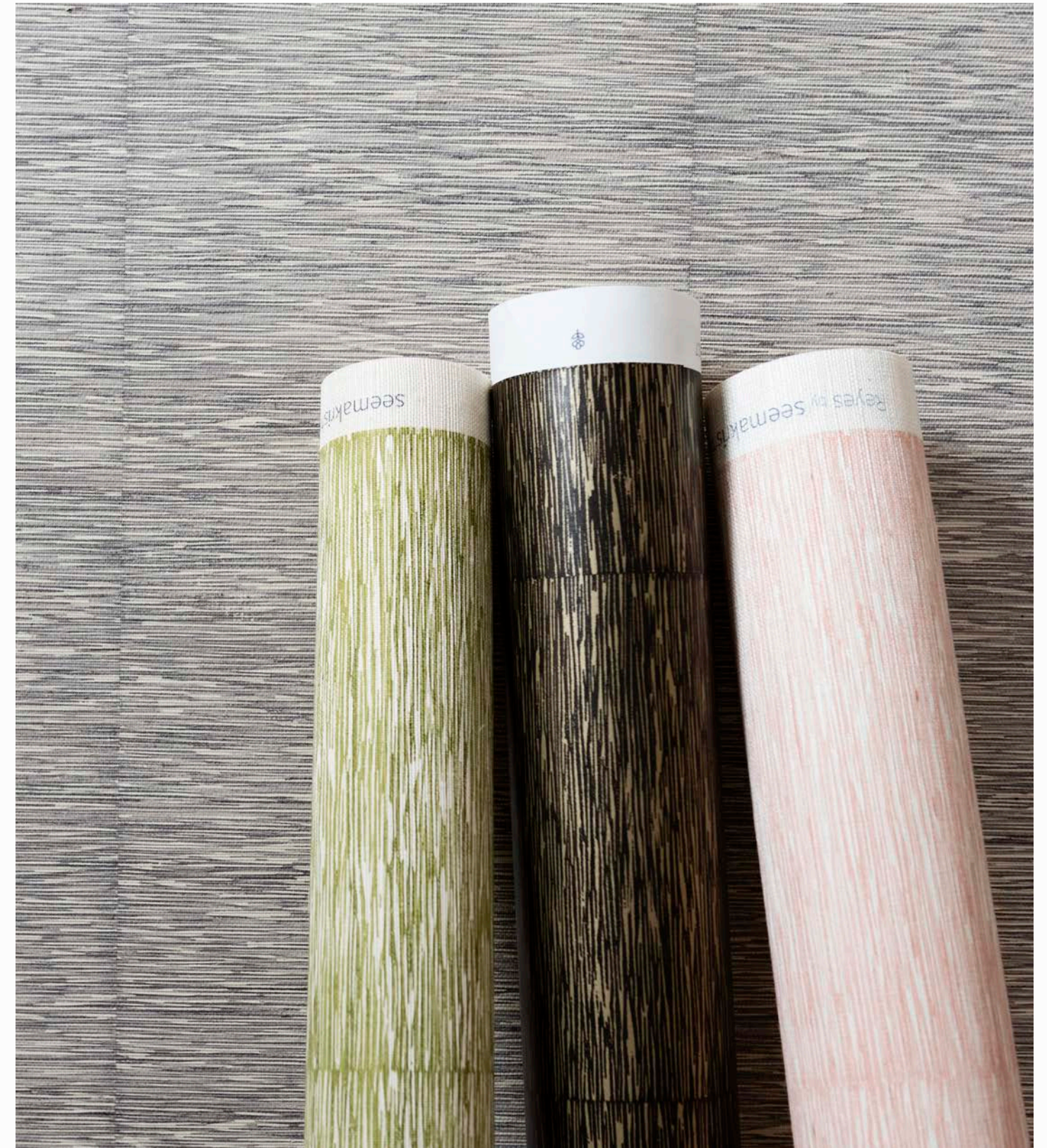
seema



REYES in Ginkgo Green

Reyes is a textural pattern that evokes the shimmering surface of the expansive Pacific Ocean as glimpsed from the cliff sides of Point Reyes in Northern California. It will bring a subtle, warm texture to your interior environment.

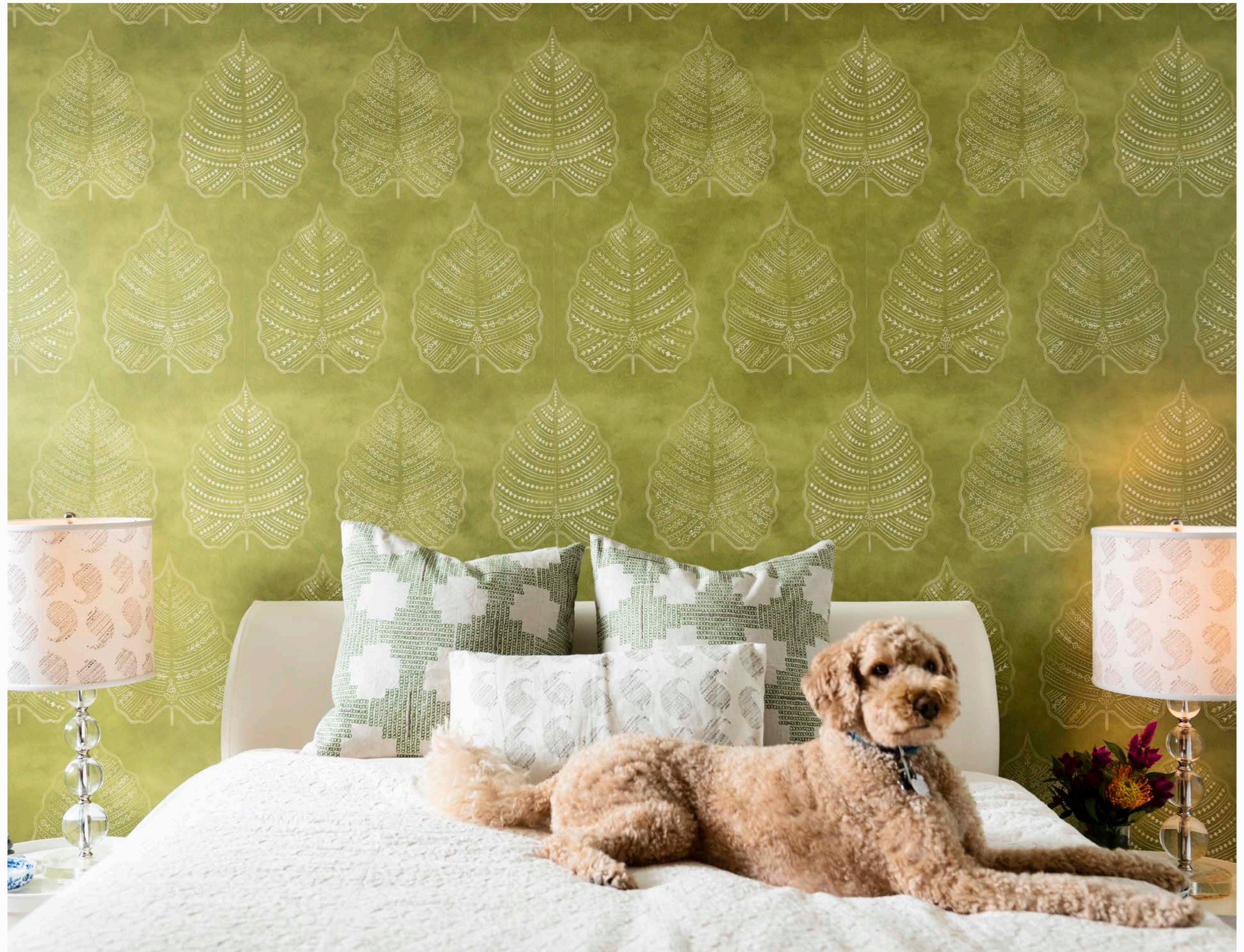
Sampled on a hand-woven sisal grasscloth and pearlescent clay-coated paper.



Our wallcoverings bring warmth and texture to a room.

This pattern is derived from the leaf of the Banyan tree- which is a tree native to Bangalore, India.

Our mascot Jasper is enjoying being in the glow of this room!



LARKSPUR in Ginkgo Green | SUTRO in Ginkgo Green | BROOKLYN in Metropolitan Gray





# LARKSPUR

Width: 30" (Trims to 27")  
Repeat: 27" H, 30" V  
NON WOVEN VELLUM



LARKSPUR in Marine Indigo



SKU# W 42-18 V MARINE INDIGO



SKU# W 43-18 V ROSÉ



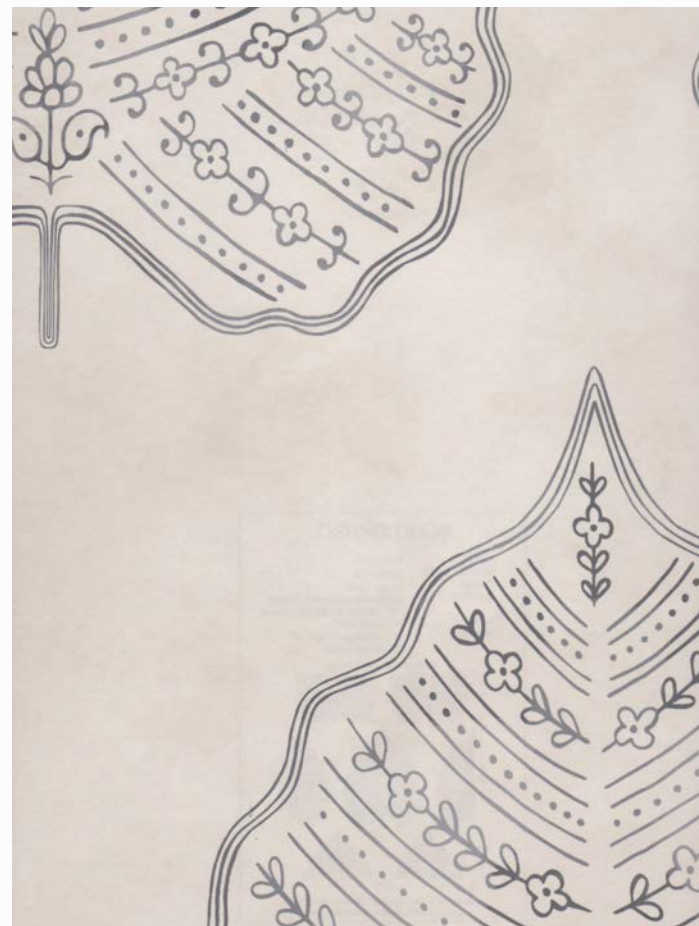
SKU# W 46-18 P GLITTER GRAPHITE



SKU# W 45-18 V GINKGO GREEN



SKU# W 47-18 V RANI PINK



SKU# W 40-18 V BADAL GRAY

Larkspur is a dazzling, statement-making pattern that honors the purity of form of the Banyan tree leaf. Named for a picturesque town in Marin County, this large-scale design creates a lush, leafy interior accent.

Sampled on a sustainable nonwoven vellum and pearlescent clay-coated paper.



JUHU in Marine Indigo | LARKSPUR in Marine Indigo

Our process begins by drawing and painting on paper.

We then translate our designs using digital technology and can vary the scale, colors, and grounds based on your preference and project goals.

We would love to work with you to bring your wallcovering ideas to life.



JUHU

Width: 36" (Trims to 33")  
Repeat: 33" H, 41" V  
SISAL GRASSCLOTH



JUHU in Brinjal Purple



SKU# W 24-18 S

BRINJAL PURPLE



SKU# W 22-18 S

MARINE INDIGO



SKU# W 20-18 S

BADAL GRAY

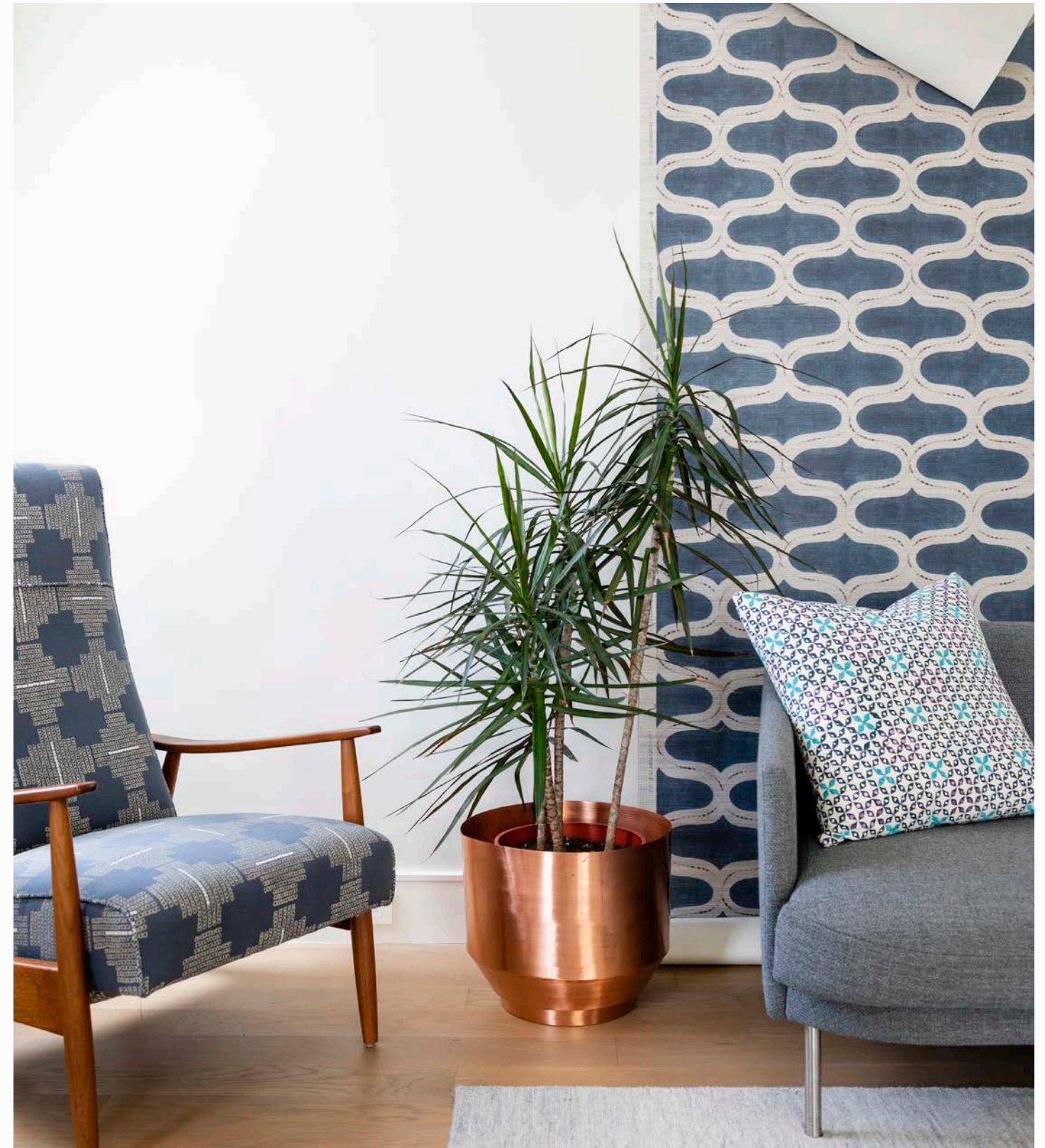


SKU# W 21-18 S

COBBLESTONE

This rhythmic pattern echoes the swell of the waves that wash upon the shores of Juhu, one of Bombay's most notable beaches. A contrast variegated line highlights bold repeated ogee motifs.

Sampled on a hand-woven sisal grasscloth.



JUHU in Marine Indigo | SUTRO in Marine Indigo | BREACH CANDY in Mughal Blue

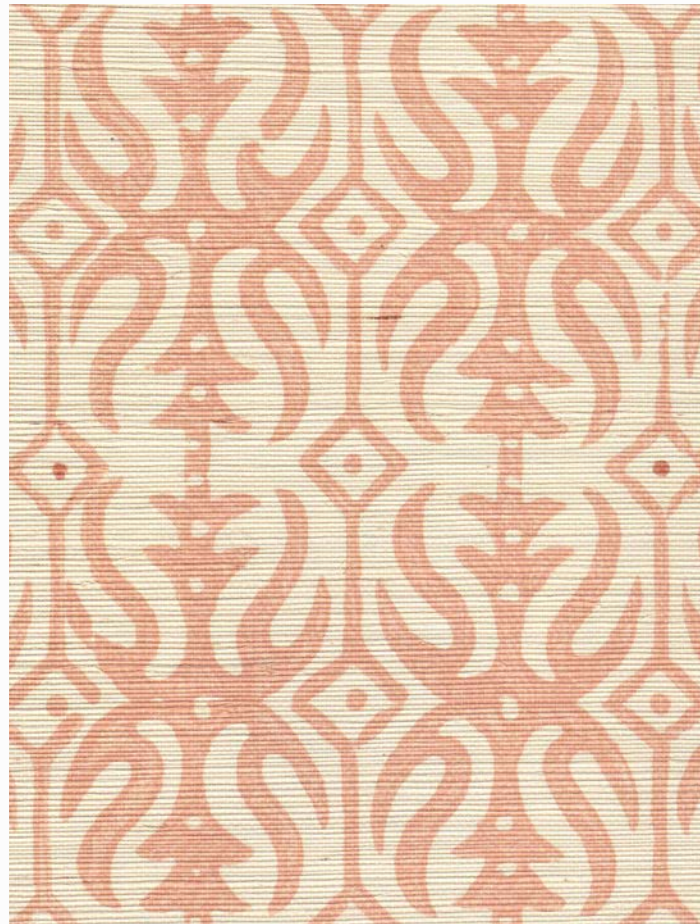


# BANDRA

Width: 36" (Trims to 33")  
Repeat: 33" H, 30" V  
SISAL GRASSCLOTH

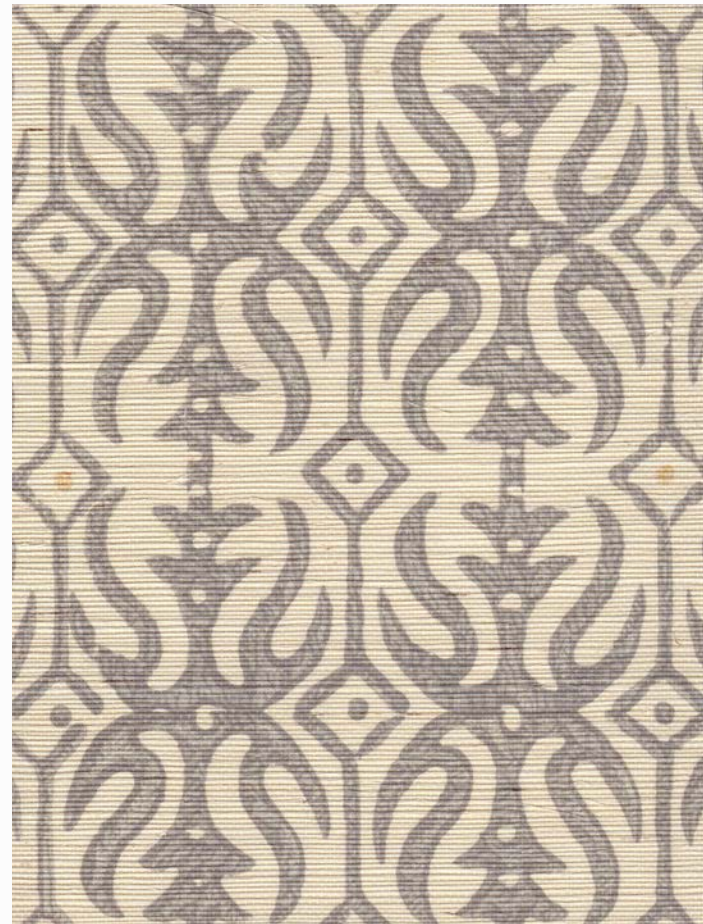


BANDRA in Rosé | GRAMERCY in Cobblestone



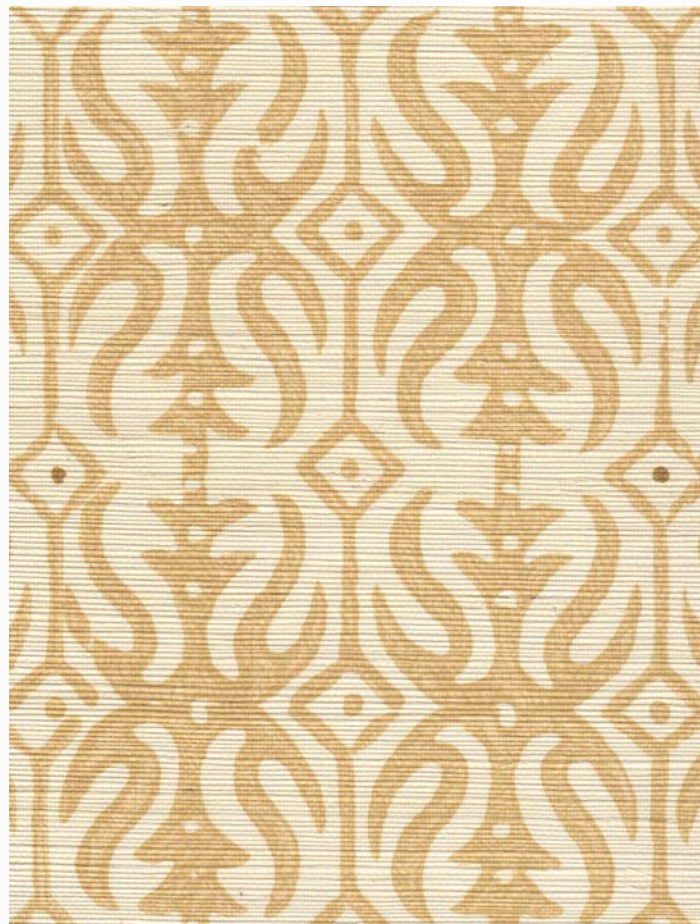
SKU# W 13-18 S

ROSÉ



SKU# W 10-18 S

BADAL GRAY



SKU# W 11-18 S

COBBLESTONE



SKU# W 01-22 S

RAIN

# Blush & Seashell

- 1. **Bandra** wallcovering in Rose'
- 2. **Nantucket** textile in Seashell
- 3. **Reyes** wallcovering in Rose'
- 4. **Nandi** textile in Terracotta
- 5. **Beacon** wallcovering in Seashell
- 6. **Yarmouth** wallcovering in Seashell
- 7. **Nandi** wallcovering in Rose Pink

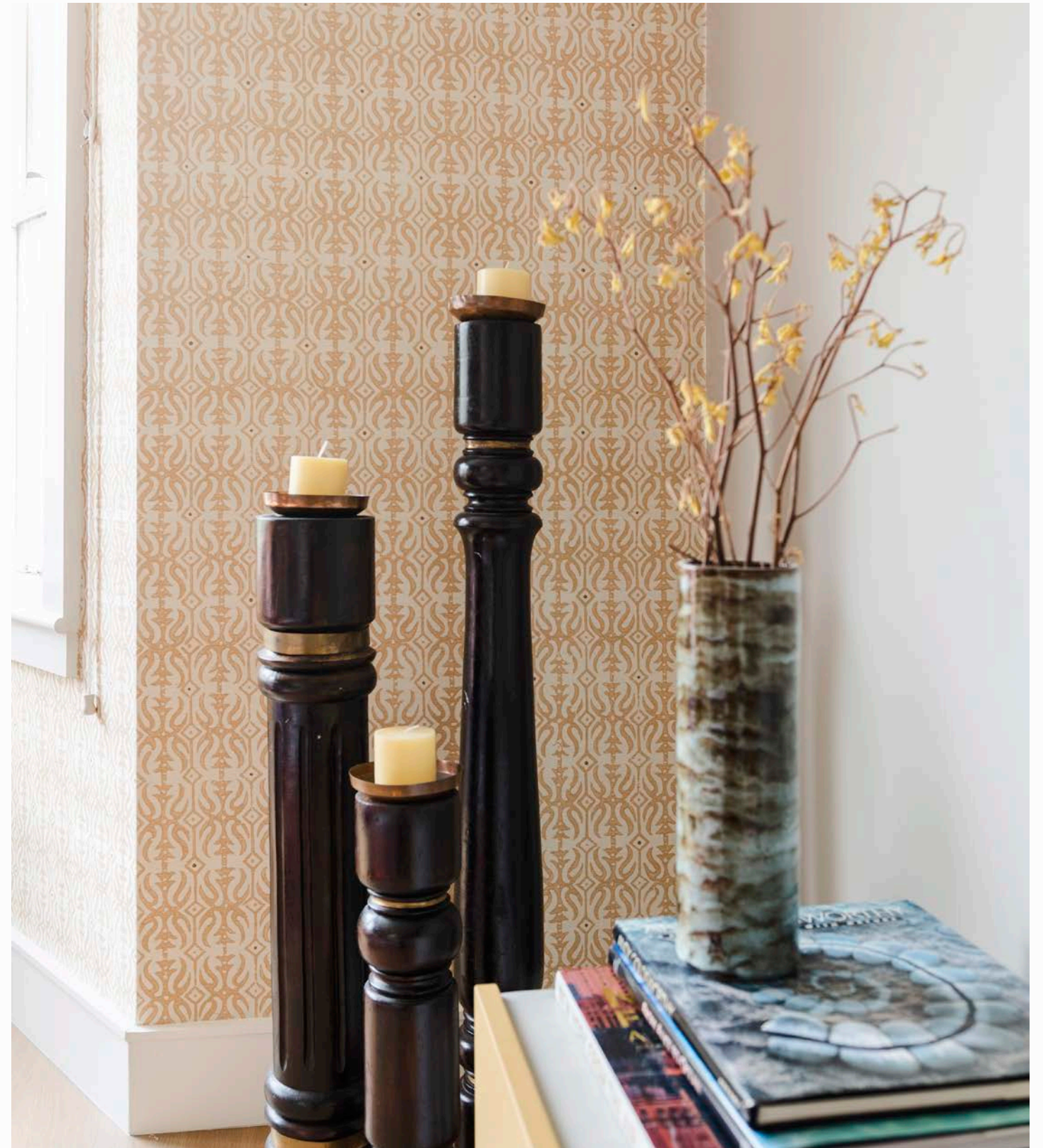




YARMOUTH in Tide Gray | BANDRA in Cobblestone | CHOWPATTY in Cobblestone

The abstracted damask motif of Bandra creates a play between positive and negative space, highlighting the natural texture of the pattern's hand-woven sisal ground. Bandra shares its name with a cosmopolitan suburb in Bombay famous for its coastline.

Sampled on a hand-woven sisal grasscloth.



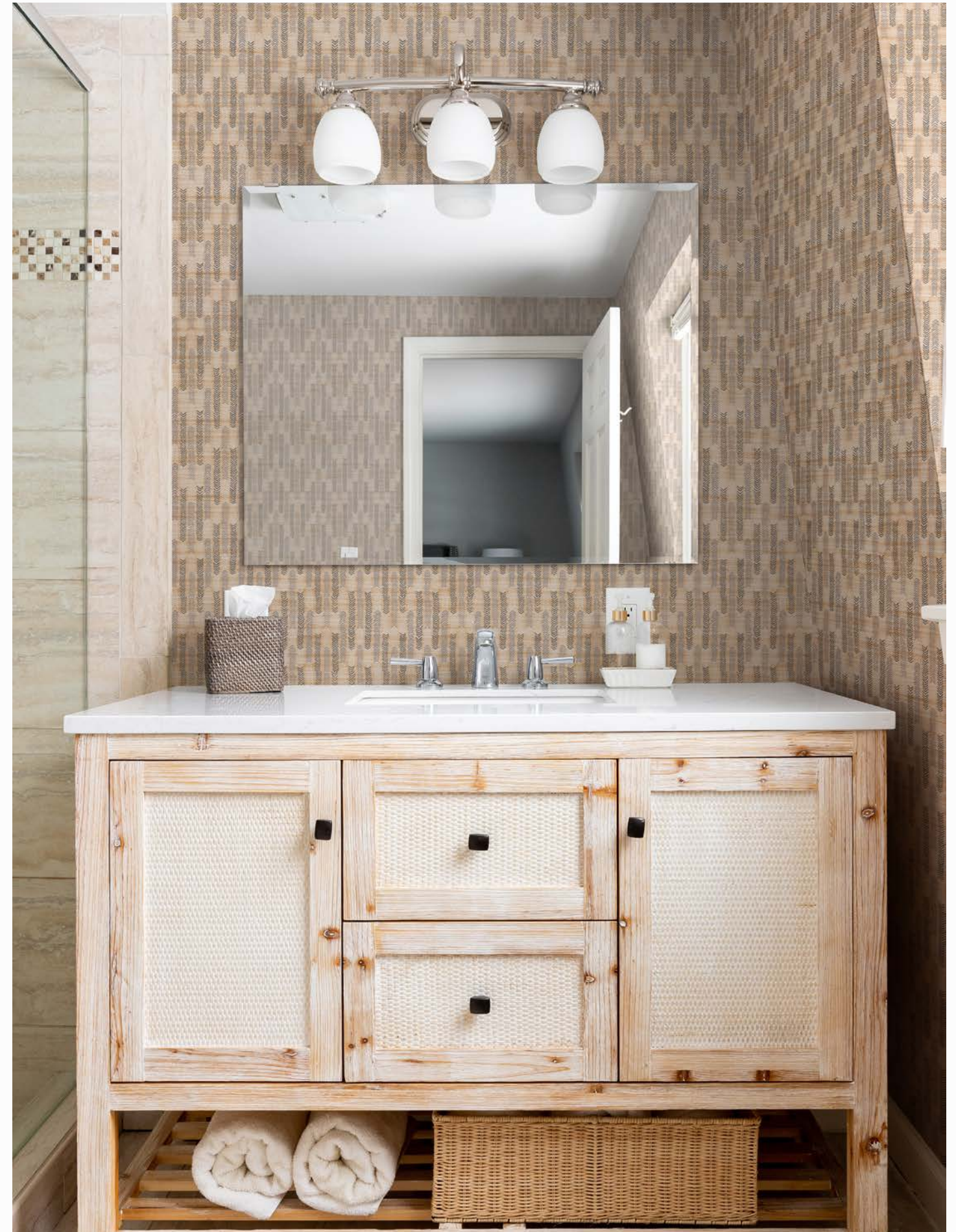
BANDRA in Cobblestone





# CHOWPATTY

Width: 30" (Trims to 27")  
Repeat: 27" H, 30" V  
NON-WOVEN VELLUM



CHOWPATTY in Cobblestone



SKU# W 00-18 V

BADAL GRAY



SKU# 01-18 V

COBBLESTONE



CHOWPATTY in Hathi Gray | DESIGN by JLW INTERIORS

Chowpatty is a contemporary chevron that pairs dotted and solid line motifs in a spectrum of tonal colors. Named for a beach in Bombay noted as the site of an annual Hindu festival celebrating Lord Ganesh, Chowpatty is a dynamic all-over pattern suited for various applications.

Sampled on a sustainable nonwoven vellum. It can be printed to order on any of our substrate offerings.

## Neutrals - Earth Tones

1. **Beacon** wallcovering in Tide Gray 2. **Reyes** wallcovering in Badal Gray 3. **Juhu** wallcovering in Cobblestone 4. **Bandra** wallcovering in Cobblestone 5. **Chowpatty** wallcovering in Cobblestone 6. **Juhu** textile in Badal Gray 7. **Juhu** textile in Badal Gray 8. **Chatham** textile in Tide Gray 9. **Yarmouth** wallcovering in Tide Gray 10. **Sonoma** textile in Metropolitan Gray





## OUR WALLCOVERINGS

Wallcoverings are sold by the linear yard, untrimmed and packed in a continuous roll of up to 50 yards.

### LEAD TIME -

Our wallcoverings are digitally printed to order in an effort to minimize waste from excess production. The lead time for wallcovering orders is 4 to 6 weeks. Rush orders with a 2 week lead time (excluding transit time) are available for an additional fee of \$325.

### MINIMUMS -

The minimum order for wallcoverings is 5 yards. Orders under 15 yards are subject to a \$75 set-up fee.

### CUSTOM -

We offer custom coloring and ground substitutions. Please contact us to learn more about minimums and lead times for custom projects.

### COMMERCIAL PROJECTS -

Our wallcovering patterns can be printed on commercial-grade vinyl and environmentally-friendly alternatives such as Type II compliant scrim-backed smooth paper (available in multiple textures) and PVC-free non-wovens.

Please contact us to learn more about ground options, minimums, and lead times for commercial projects.

## PRODUCT INFO

We use the following grounds for our wallcoverings. All measurements are for untrimmed yardage:

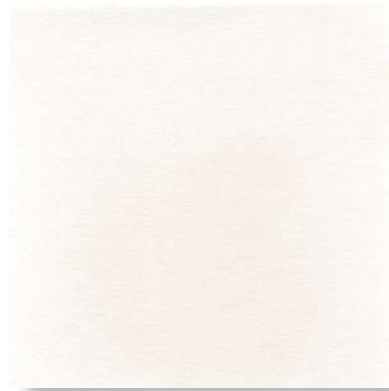
Sisal grasscloth	36" wide, untrimmed
Paperweave	36" wide, untrimmed
Non-woven vellum	30" wide, untrimmed
Non-woven fibre	30" wide, untrimmed
*Pearlescent paper	30" wide, untrimmed
Clay-coated paper	30" wide, untrimmed
Clay-coated paper	60" wide, untrimmed

All grounds are Class A Fire-rated based on the ASTM-E84 standard.

Please note ground substitutions are available for each of our wallcovering patterns.



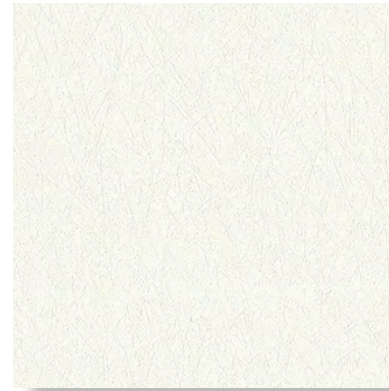
## WALLCOVERING SUBSTRATES



Standard Clay Coated Paper



Non-woven Vellum



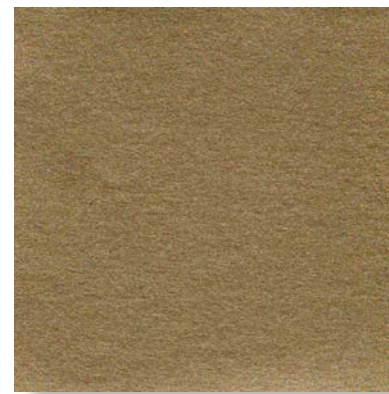
Non-woven Fibre



Paperweave



Sisal Grasscloth

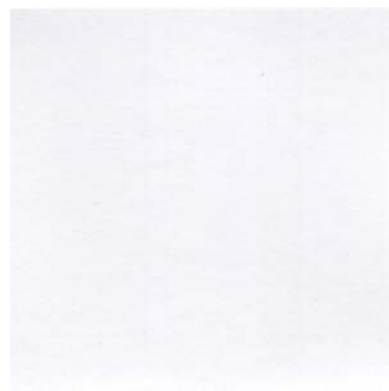


Pearlescent Coated Paper

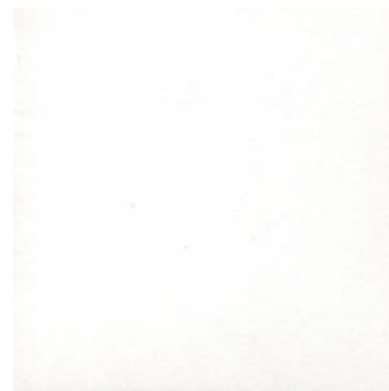
## FOR COMMERCIAL APPLICATIONS



Non-PVC



Type II Vinyl



Eco-Friendly Vinyl



# SHOWROOMS

ARIZONA  
Deb Design Source  
480.694.7597

MIAMI  
Holland & Sherry  
954.923.6656

ATLANTA  
Paul +  
404.261.1820

MIDWEST  
Cloth & Kind  
734.800.4996

BOSTON  
Studio 534  
617.345.9900

NEW YORK  
Holland & Sherry  
877.631.0090

CHICAGO  
Cloth & Kind  
734.800.4996

SAN FRANCISCO  
Holland & Sherry  
415.552.2144

DALLAS  
Holland & Sherry  
469.249.6422

AUSTRALIA  
Tigger Hall  
0412.534.419

DENVER  
Holland & Sherry  
303.590.3292

PARIS  
Jules et Jim  
33.(0)4.4226.3972

HOUSTON  
Holland & Sherry  
713.357.2542

TORONTO  
Y & Co  
416.968.7700

LOS ANGELES  
Harbinger  
310.858.6884

# seemakrish

---

185 Arkansas St., Studio B  
San Francisco, CA 94107  
info@seemakrish.com | 415.231.0335

Follow us @seemakrishdesign  
Visit us at seemakrish.com