



seemakrish

Wallcoverings Lookbook



Seema Krish wallcovering patterns draw from India's rich craft heritage to bring a new dimension to your interior spaces.



Our patterns stand alone and can also be combined with our hand-crafted textiles.

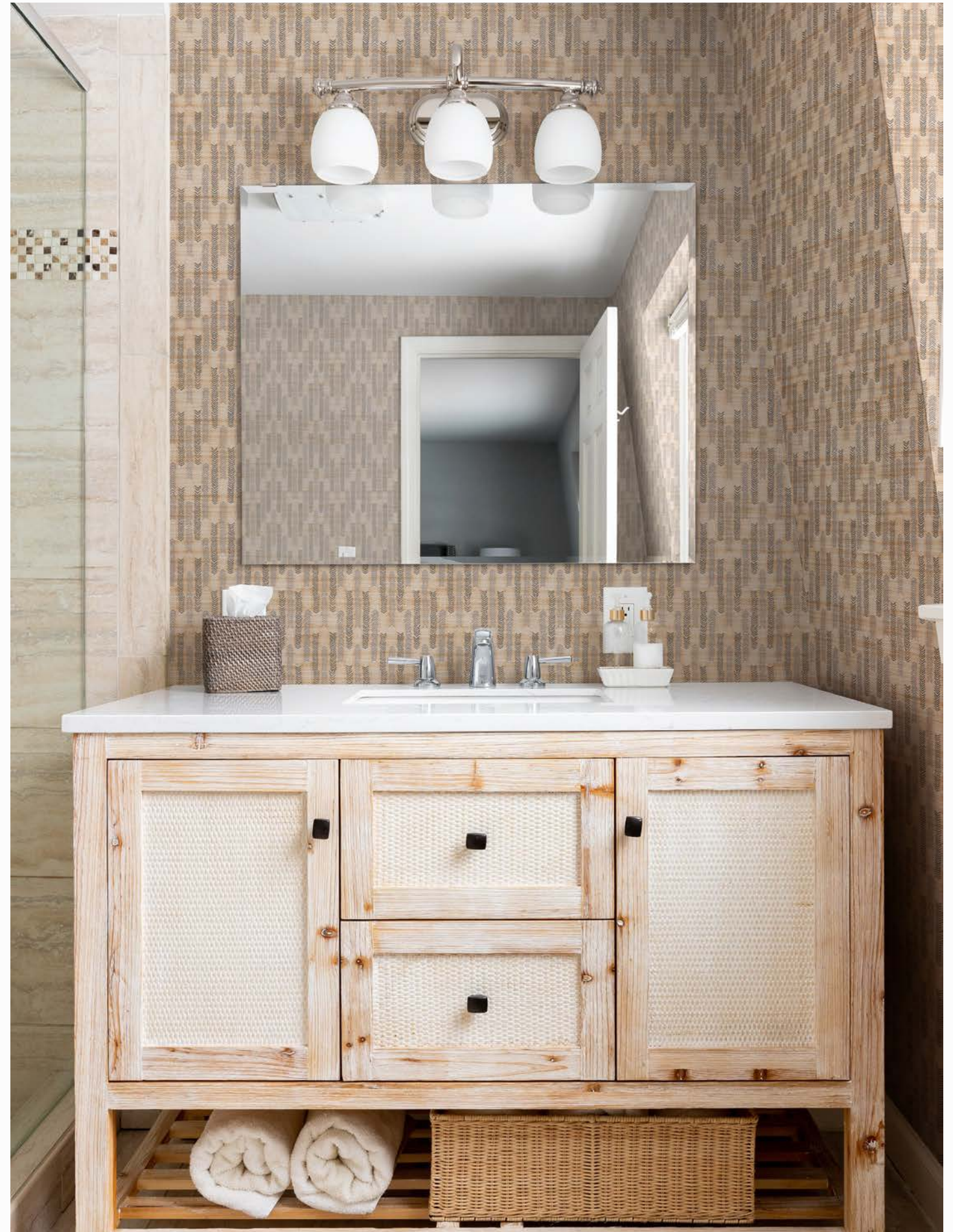
Hand drawn and sold by the yard, our wallcoverings are printed to order in the U.S. and offer endless opportunities for customization.





CHOWPATTY

Width: 30" (Trims to 27")
Repeat: 27" H, 30" V
NON-WOVEN VELLUM



CHOWPATTY in Cobblestone



SKU# W 00-18 V

BADAL GRAY



SKU# 01-18 V

COBBLESTONE



CHOWPATTY in Hathi Gray | DESIGN by JLW INTERIORS

Chowpatty is a contemporary chevron that pairs dotted and solid line motifs in a spectrum of tonal colors. Named for a beach in Bombay noted as the site of an annual Hindu festival celebrating Lord Ganesh, Chowpatty is a dynamic all-over pattern suited for various applications.

Sampled on a sustainable nonwoven vellum. It can be printed to order on any of our substrate offerings.

Neutrals - Earth Tones

1. **Beacon** wallcovering in Tide Gray 2. **Reyes** wallcovering in Badal Gray 3. **Juhu** wallcovering in Cobblestone 4. **Bandra** wallcovering in Cobblestone 5. **Chowpatty** wallcovering in Cobblestone 6. **Juhu** textile in Badal Gray 7. **Juhu** textile in Badal Gray 8. **Chatham** textile in Tide Gray 9. **Yarmouth** wallcovering in Tide Gray 10. **Sonoma** textile in Metropolitan Gray



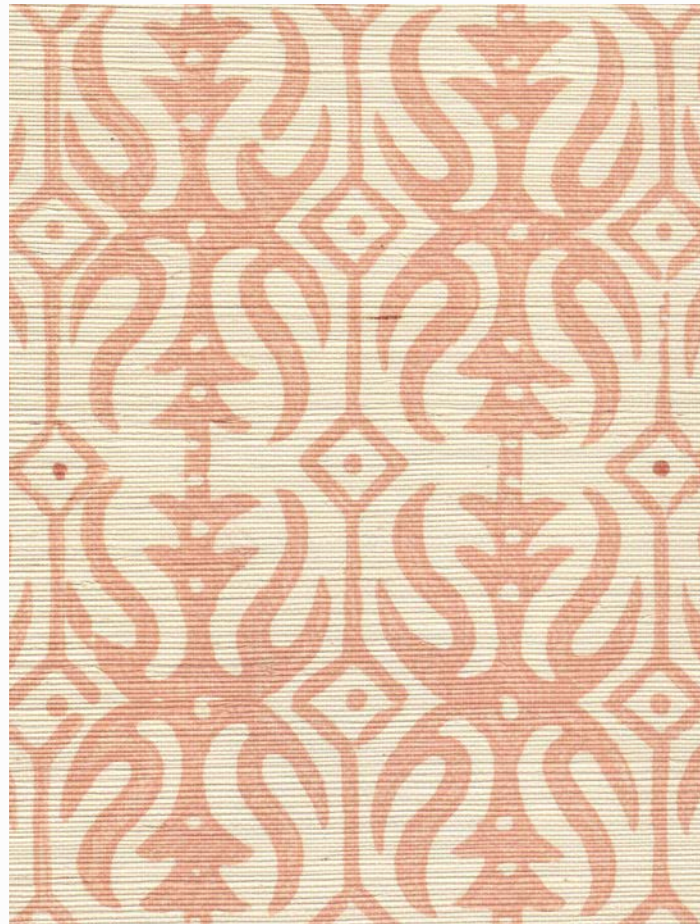


BANDRA

Width: 36" (Trims to 33")
Repeat: 33" H, 30" V
SISAL GRASSCLOTH

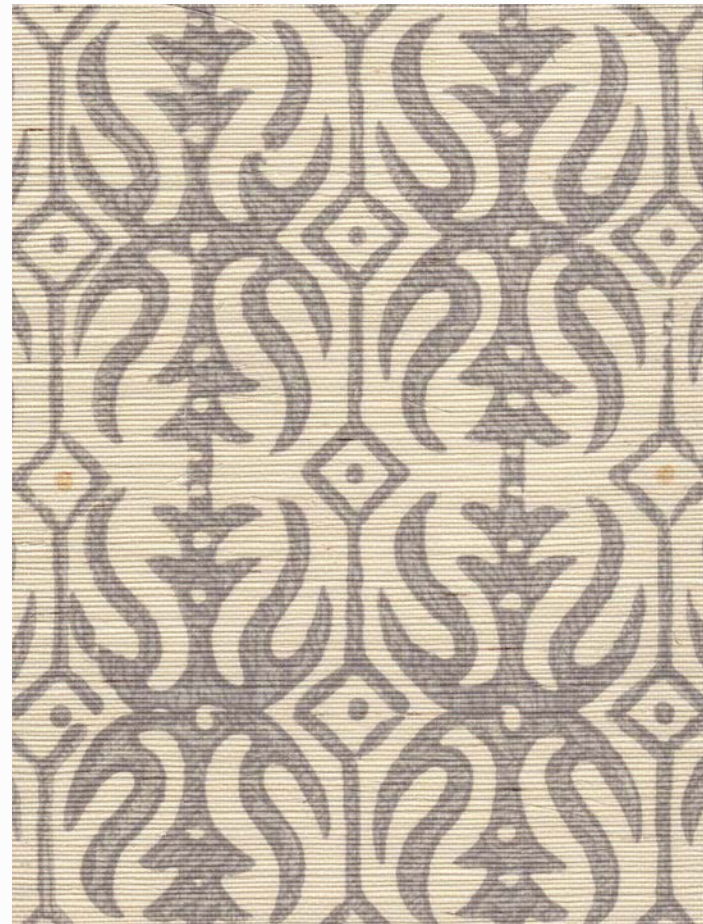


BANDRA in Rosé | GRAMERCY in Cobblestone



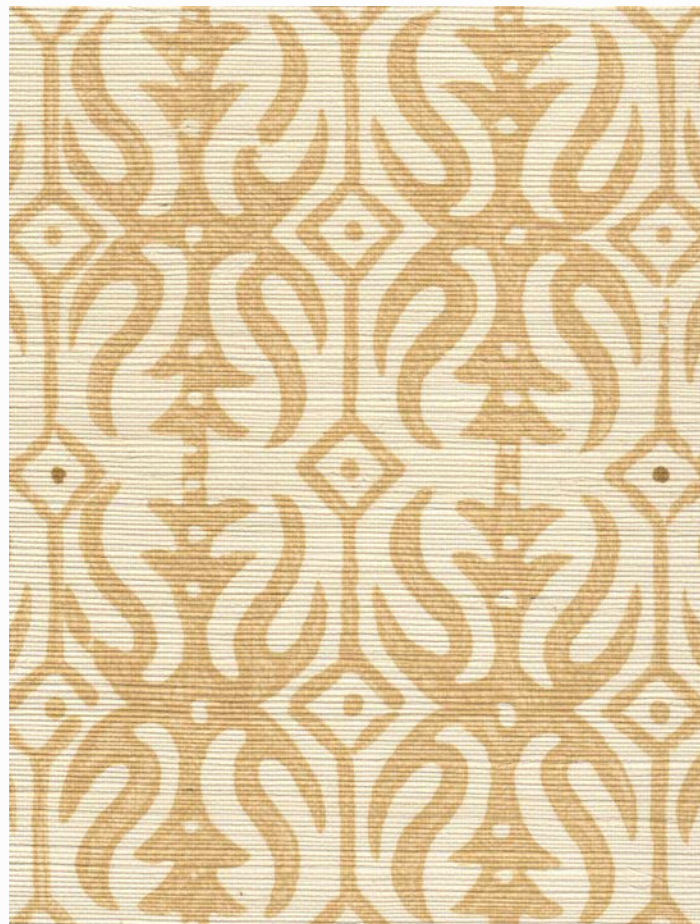
SKU# W 13-18 S

ROSÉ



SKU# W 10-18 S

BADAL GRAY



SKU# W 11-18 S

COBBLESTONE



SKU# W 01-22 S

RAIN

Blush & Seashell

- 1. **Bandra** wallcovering in Rose'
- 2. **Nantucket** textile in Seashell
- 3. **Reyes** wallcovering in Rose'
- 4. **Nandi** textile in Terracotta
- 5. **Beacon** wallcovering in Seashell
- 6. **Yarmouth** wallcovering in Seashell
- 7. **Nandi** wallcovering in Rose Pink



1.

2.

3.

4.

6.

7.

5.

seemakrish

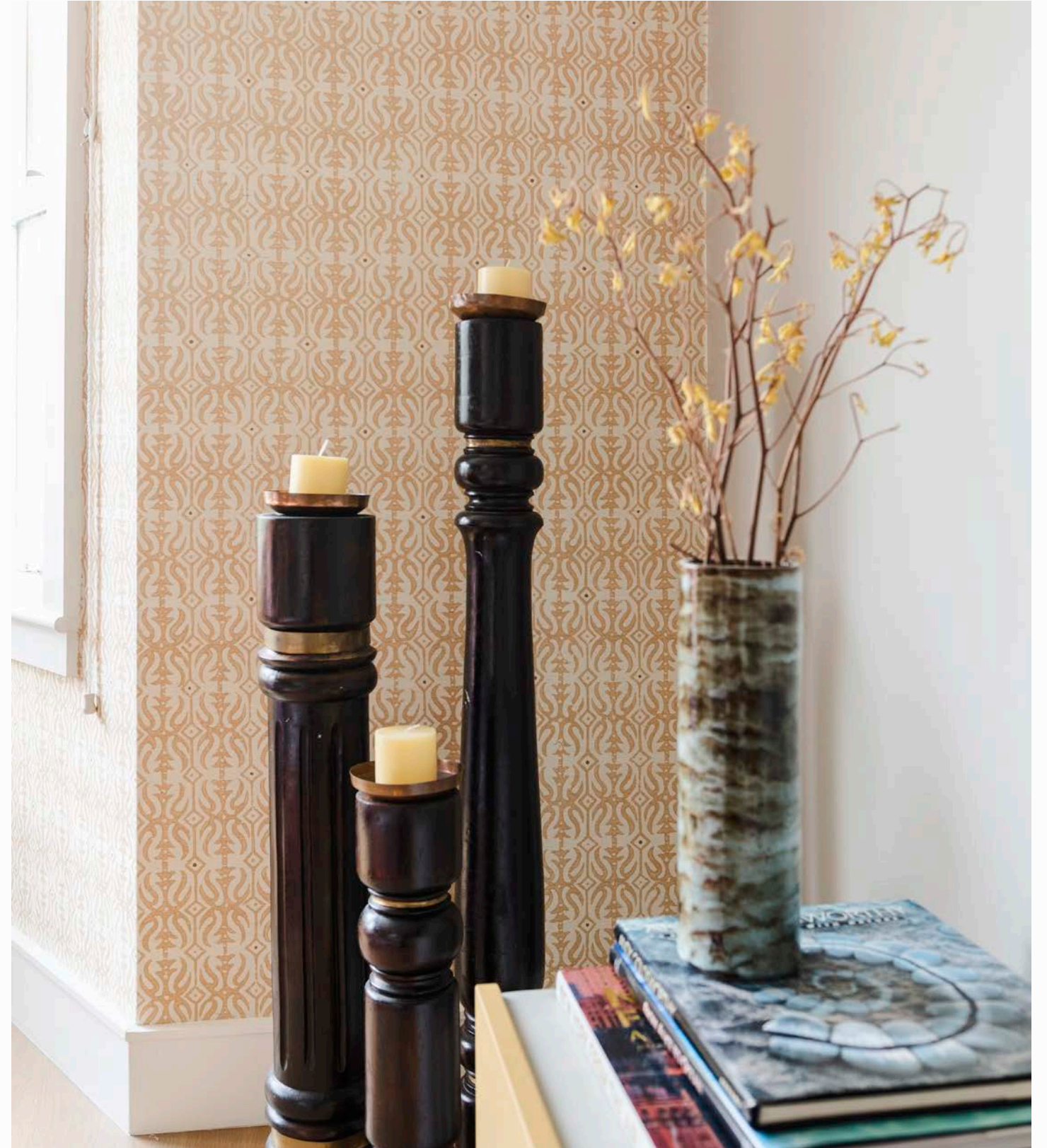
seemakrish



YARMOUTH in Tide Gray | BANDRA in Cobblestone | CHOWPATTY in Cobblestone

The abstracted damask motif of Bandra creates a play between positive and negative space, highlighting the natural texture of the pattern's hand-woven sisal ground. Bandra shares its name with a cosmopolitan suburb in Bombay famous for its coastline.

Sampled on a hand-woven sisal grasscloth.



BANDRA in Cobblestone



JUHU

Width: 36" (Trims to 33")
Repeat: 33" H, 41" V
SISAL GRASSCLOTH



JUHU in Brinjal Purple



SKU# W 24-18 S

BRINJAL PURPLE



SKU# W 22-18 S

MARINE INDIGO



SKU# W 20-18 S

BADAL GRAY

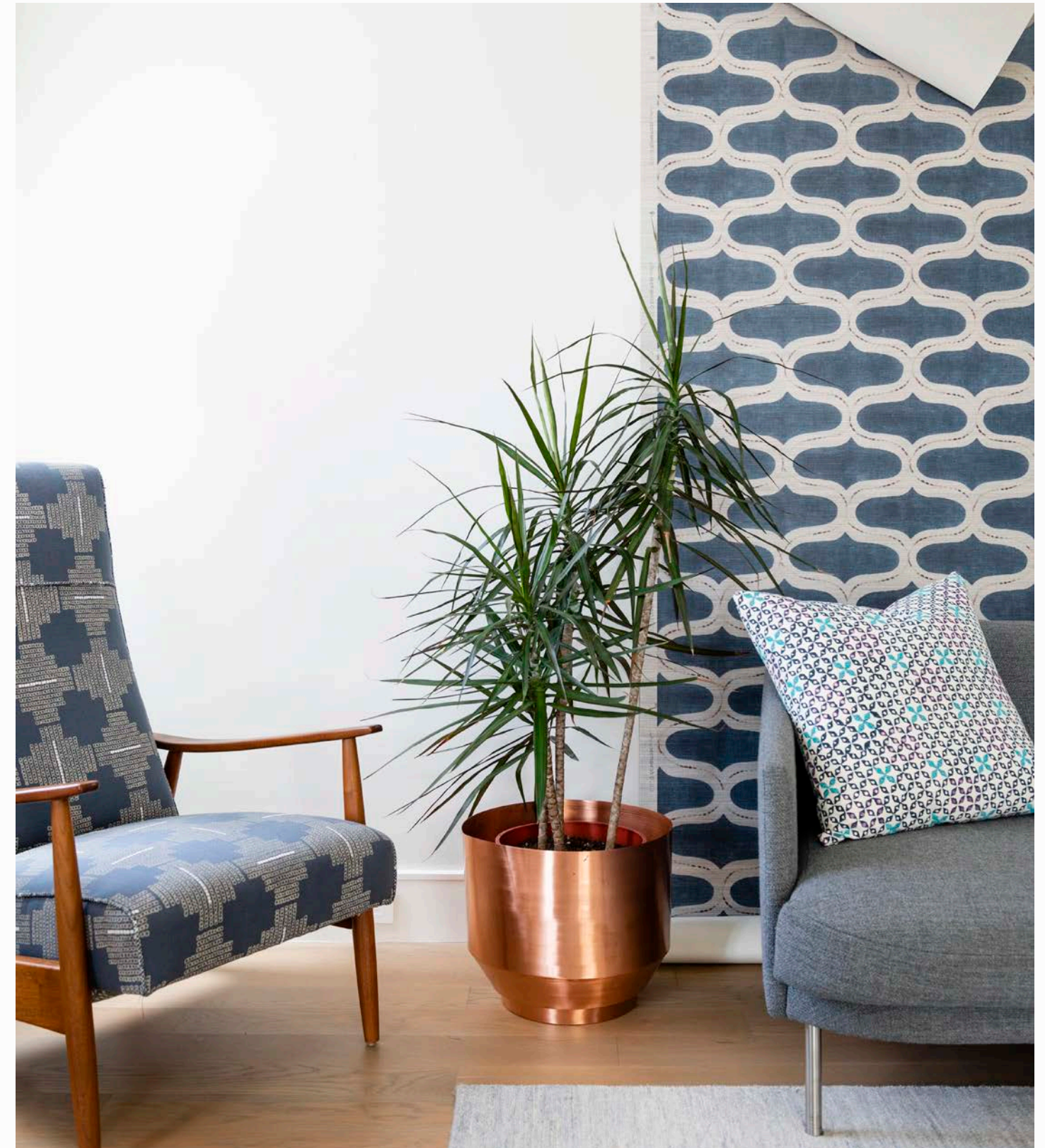


SKU# W 21-18 S

COBBLESTONE

This rhythmic pattern echoes the swell of the waves that wash upon the shores of Juhu, one of Bombay's most notable beaches. A contrast variegated line highlights bold repeated ogee motifs.

Sampled on a hand-woven sisal grasscloth.



JUHU in Marine Indigo | SUTRO in Marine Indigo | BREACH CANDY in Mughal Blue



JUHU in Marine Indigo | LARKSPUR in Marine Indigo

Our process begins by drawing and painting on paper.

We then translate our designs using digital technology and can vary the scale, colors, and grounds based on your preference and project goals.

We would love to work with you to bring your wallcovering ideas to life.



LARKSPUR

Width: 30" (Trims to 27")
Repeat: 27" H, 30" V
NON WOVEN VELLUM



LARKSPUR in Marine Indigo



SKU# W 42-18 V MARINE INDIGO



SKU# W 43-18 V ROSÉ



SKU# W 46-18 P GLITTER GRAPHITE



SKU# W 45-18 V GINKGO GREEN



SKU# W 47-18 V RANI PINK



SKU# W 40-18 V BADAL GRAY

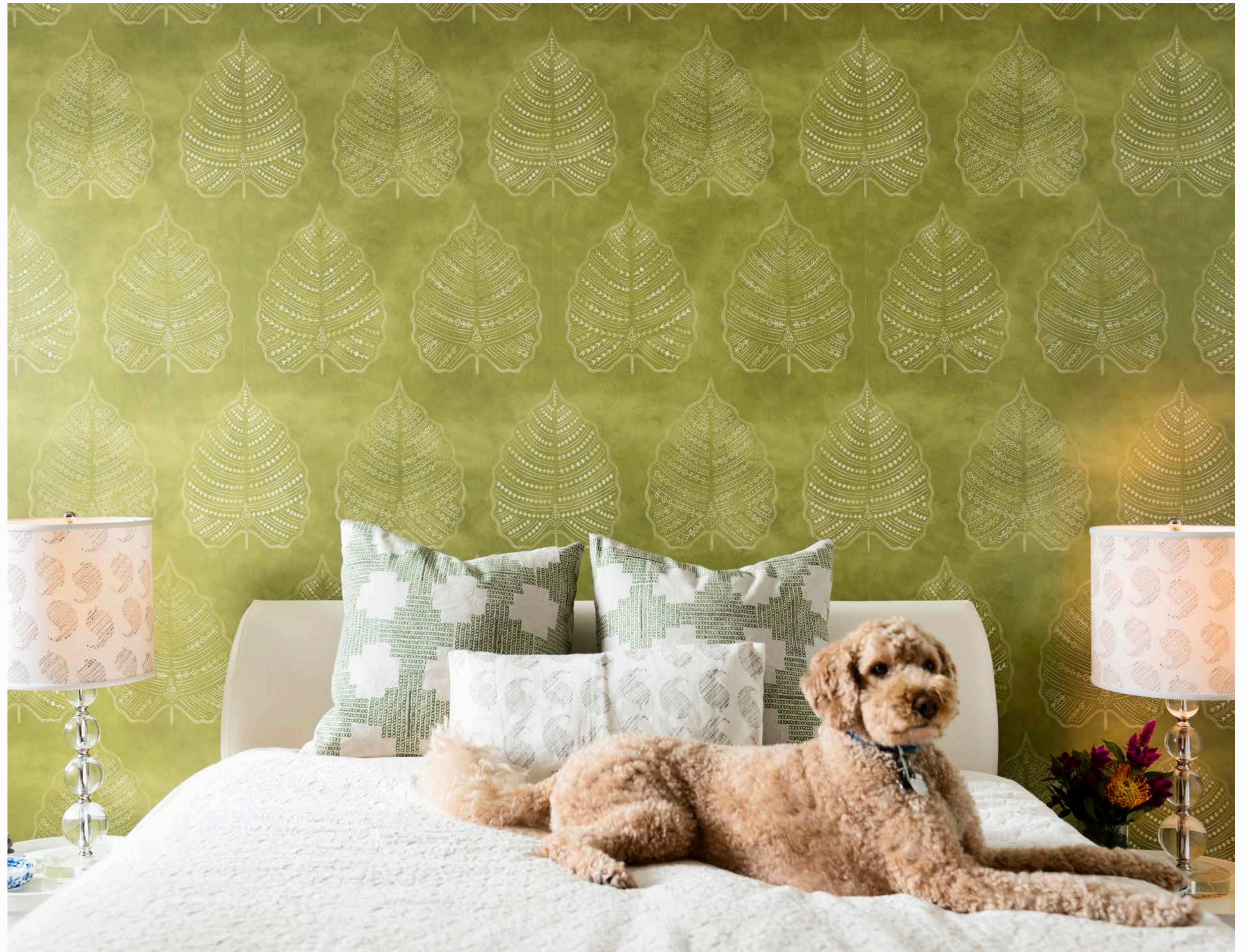
Larkspur is a dazzling, statement-making pattern that honors the purity of form of the Banyan tree leaf. Named for a picturesque town in Marin County, this large-scale design creates a lush, leafy interior accent.

Sampled on a sustainable nonwoven vellum and pearlescent clay-coated paper.

Our wallcoverings bring warmth and texture to a room.

This pattern is derived from the leaf of the Banyan tree- which is a tree native to Bangalore, India.

Our mascot Jasper is enjoying being in the glow of this room!



LARKSPUR in Ginkgo Green | SUTRO in Ginkgo Green | BROOKLYN in Metropolitan Gray



REYES

Width: 36" (Trims to 33")
Repeat: 33" H, 39" V
SISAL GRASSCLOTH



REYES in Badal Gray | JUHU in Badal Gray



SKU# W 30-18 S

BADAL GRAY



SKU# W 33-18 S

ROSÉ



SKU# W 36-18 P

GLITTER GRAPHITE



SKU# W 35-18 S

GINKGO GREEN

Greens

1. **Larkspur** wallcovering in Ginkgo Green 2. **Beacon** wallcovering in Sagebrush 3. **Yarmouth** wallcovering in Sagebrush 4. **Alta** textile in Ginkgo Green 5. **Pacific** textile in Ginkgo Green 6. **Reyes** wallcovering in Ginkgo Green 7. **Lalbagh** wallcovering in Neem Green 8. **Tanjore** textile in Neem Green

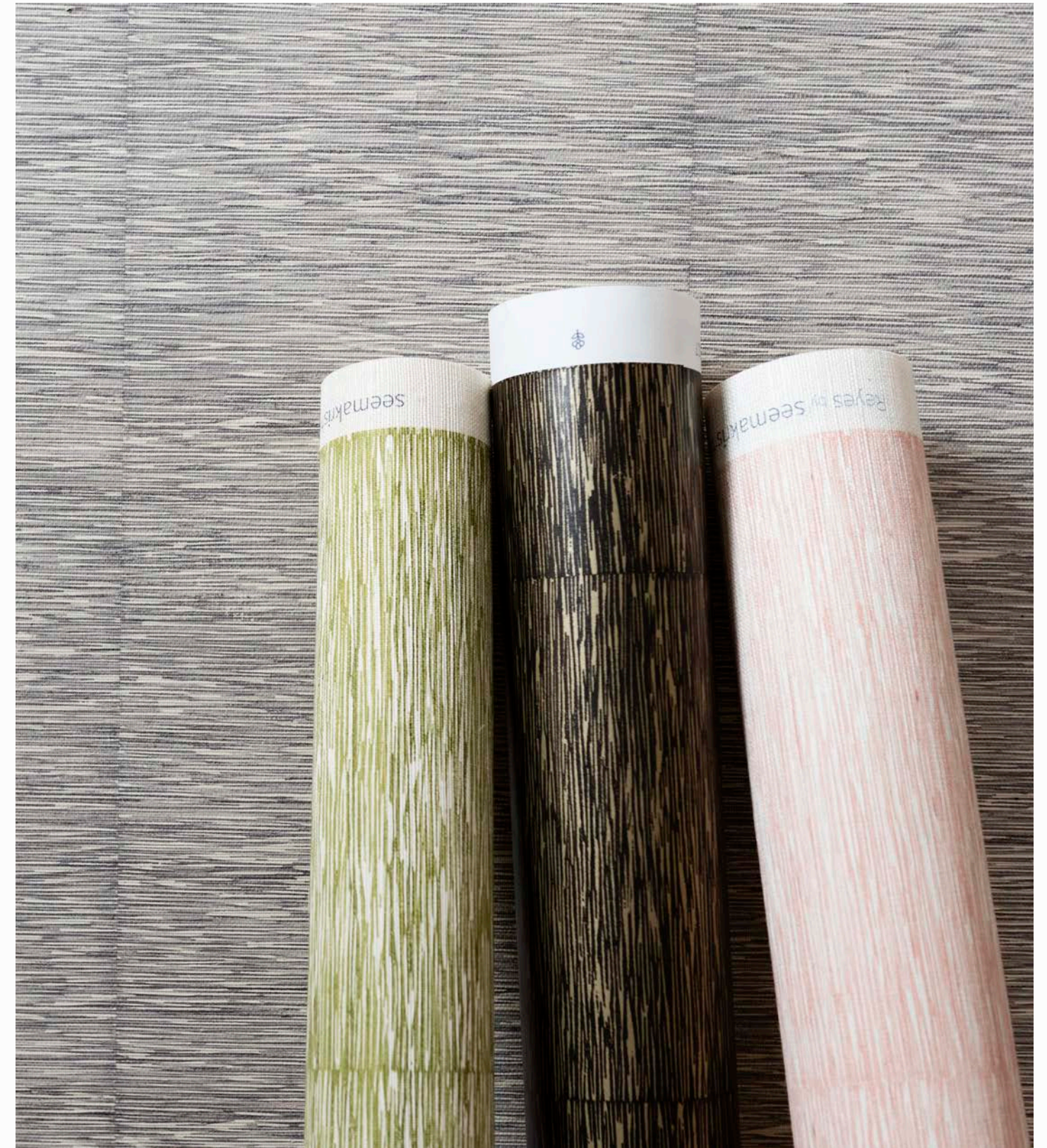




REYES in Ginkgo Green

Reyes is a textural pattern that evokes the shimmering surface of the expansive Pacific Ocean as glimpsed from the cliff sides of Point Reyes in Northern California. It will bring a subtle, warm texture to your interior environment.

Sampled on a hand-woven sisal grasscloth and pearlescent clay-coated paper.





BEACON

Width: 30" (Trims to 27")
Repeat: 27" H, 16.75" V
STANDARD CLAY COATED PAPER



BEACON in Sagebrush



SKU# W 00-20 C

COVE BLUE



SKU# W 04-20 C

SAGEBRUSH



SKU# W 08-20 C

TIDE GRAY



SKU# W 06-20 C

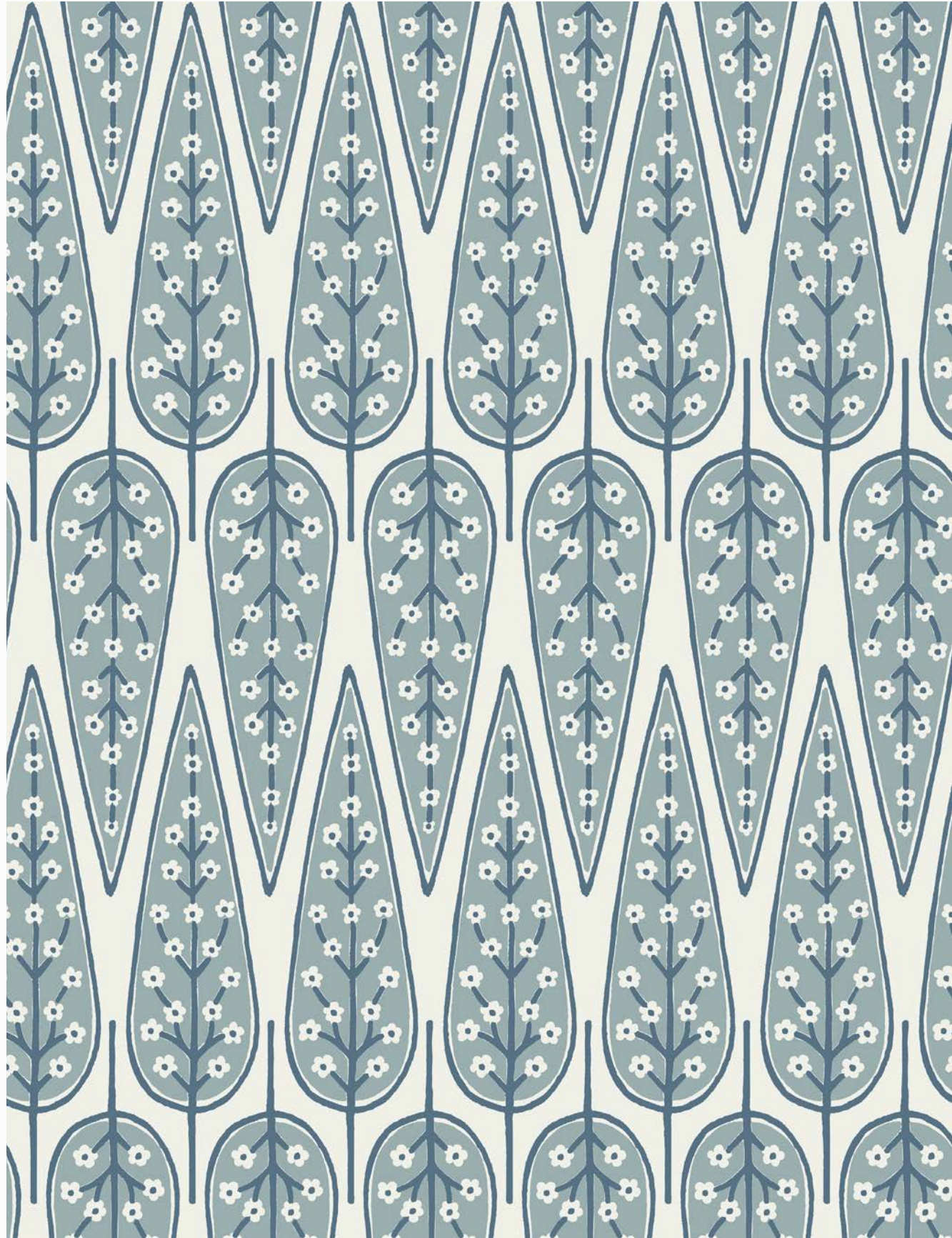
SEASHELL

Beacon is a painterly geometric, small-scale pattern named for the historic Boston neighborhood whose charm lies in its Federal-style row houses, narrow gaslit streets, and brick sidewalks.

Sampled on FSC-certified clay-coated paper.



BEACON in Cove Blue



YARMOUTH

Width: 30" (Trims to 27")
Repeat: 27" H, 22.5" V
STANDARD CLAY COATED PAPER



YARMOUTH in Cove Blue



SKU# W 10-20 C

COVE BLUE



SKU# W 14-20 C

SAGEBRUSH



SKU# W 16-20 C

SEASHELL



SKU# W 18-20 C

TIDE GRAY

Blues

1. **Union Square** textile in Hudson Indigo 2. **Juhu** wallcovering in Marine Indigo 3. **Yarmouth** wallcovering in Cove Blue 4. **Sutro** wallcovering in Seaport Blue 5. **Beacon** wallcovering in Cove Blue 6. **Surfside** wallcovering in Seaport Blue 7. **Juhu** textile in Hudson Indigo 8. **Yarmouth** textile in Seaport Blue





YARMOUTH in Sagebrush | EDGARTOWN in Seashell | BEACON in Tide Gray

Yarmouth is a nature-inspired geometric print that celebrates the historic beech trees of this charming beach town in Cape Cod.

Sampled on FSC-certified clay-coated paper.



YARMOUTH in Dune



EDGARTOWN

Width: 60" (Trims to 54")
Repeat: 54" H, 51" V
STANDARD CLAY COATED PAPER



EDGARTOWN in Tide Gray



SKU# W 23-20 C

RANI PINK



SKU# W 25-20 C

SEAPORT BLUE



SKU# W 26-20 C

SEASHELL



SKU# W 22-20 C

TIDE GRAY



EDGARTOWN in Rani Pink | BREACH CANDY in Rani Pink | MAHALAXMI in Rani Pink



Creeping floral vines and ornate medallions make up Edgartown, a large-scale botanical print named for a town on Martha's Vineyard noted for its historic charm.

Sampled on FSC-certified clay-coated paper.

EDGARTOWN in Rani Pink

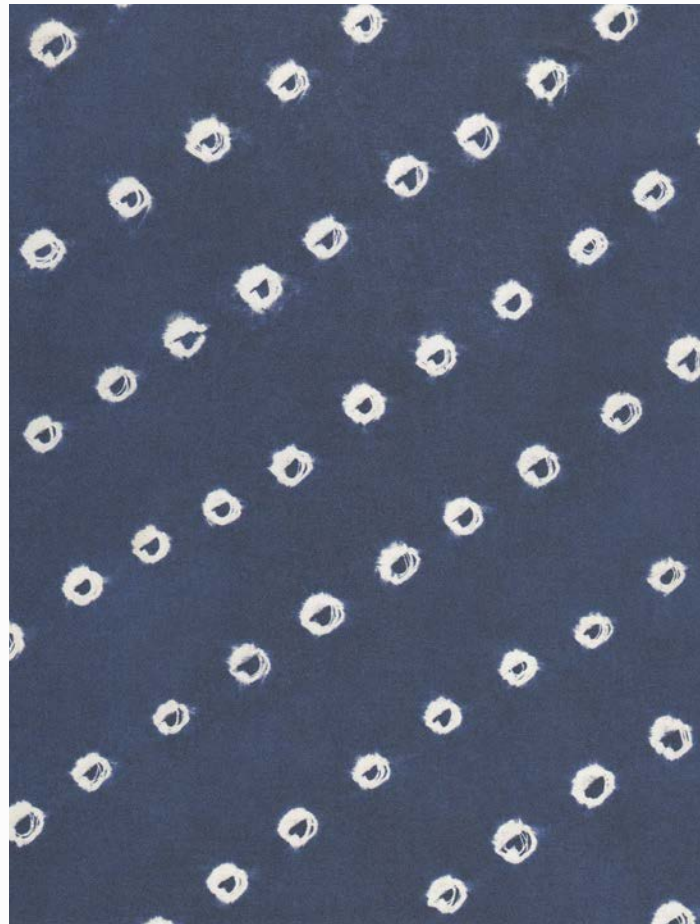


SURFSIDE

Width: 30" (Trims to 27")
Repeat: 27" H, 36" V
STANDARD CLAY COATED PAPER



SURFSIDE in Seaport Blue



SKU# W 05-21 C

SEAPORT BLUE

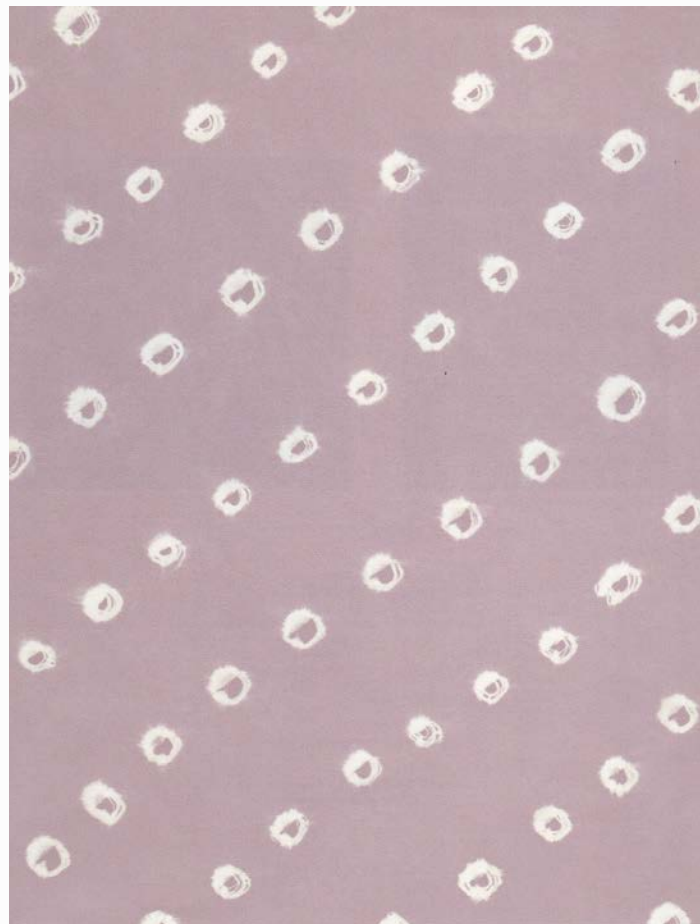


SKU# W 04-21 C

MIST GRAY

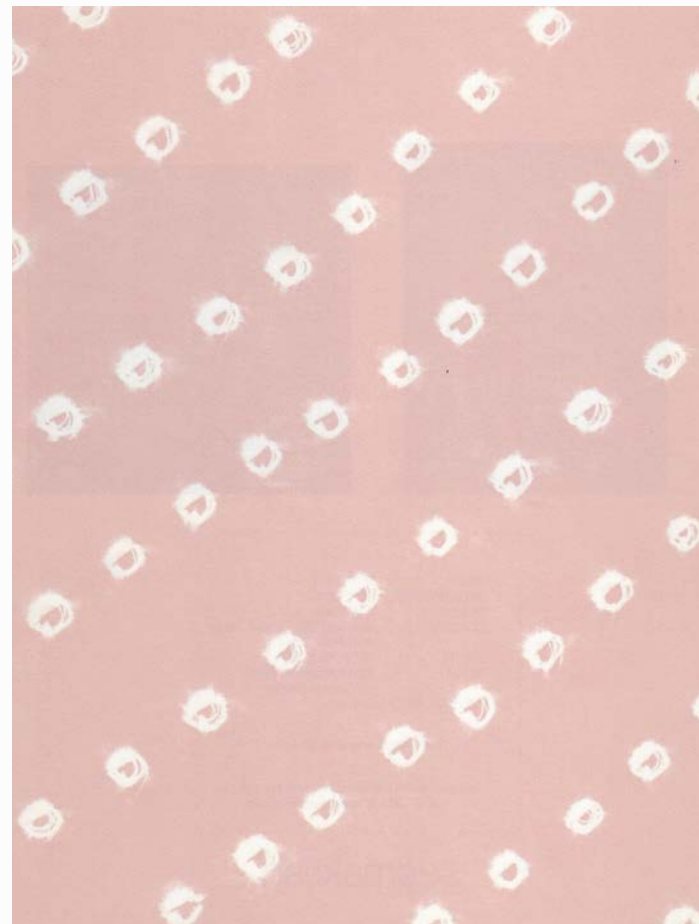


SURFSIDE in Seaglass



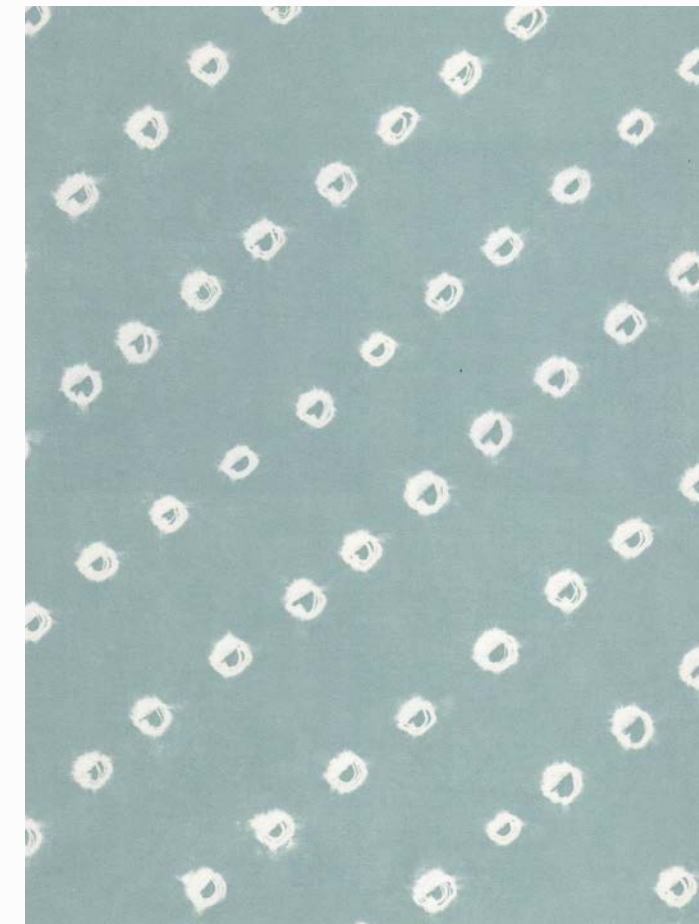
SKU# W 03-21 C

LILAC



SKU# W 01-21 C

STARFISH

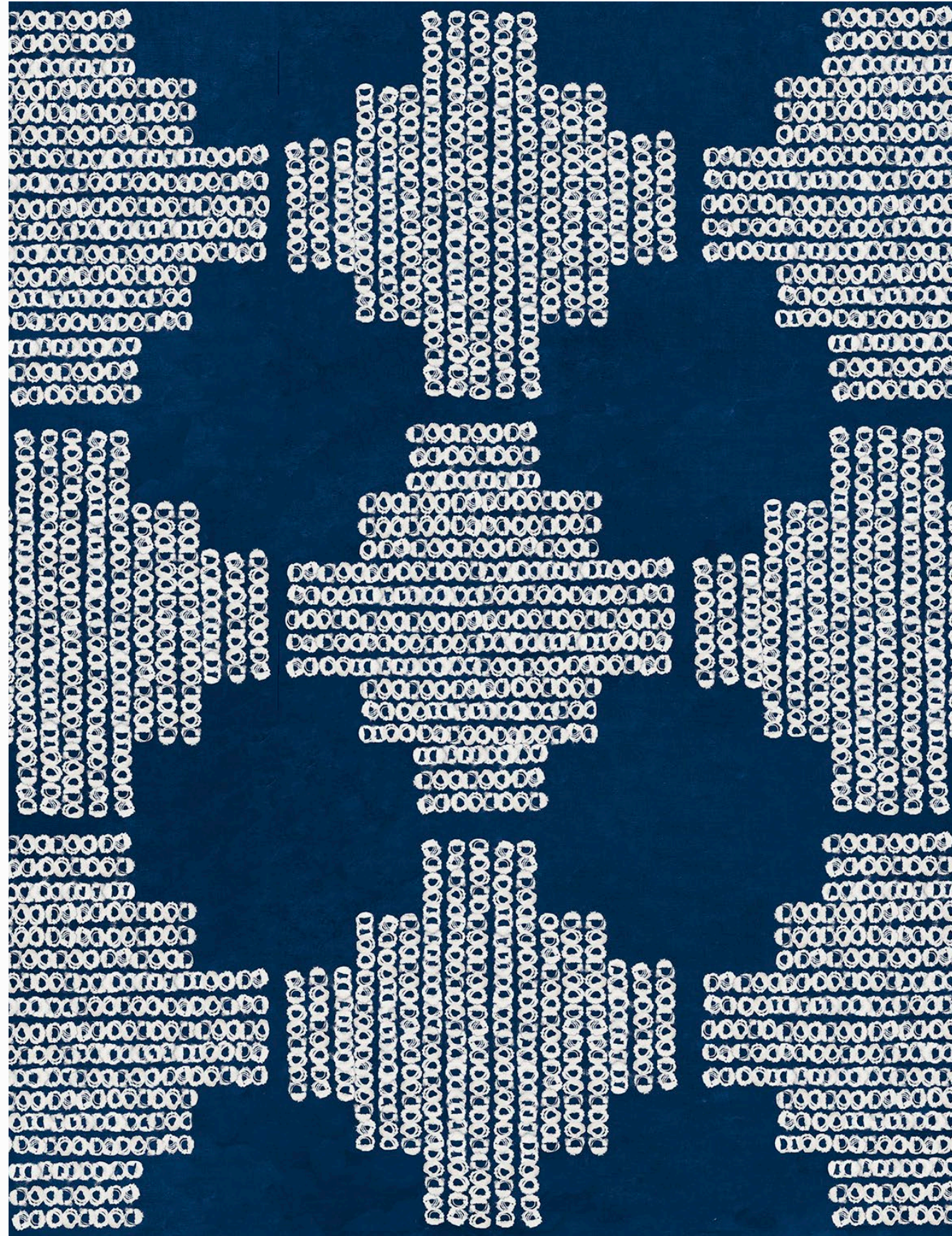


SKU# W 02-21 C

SEAGLASS

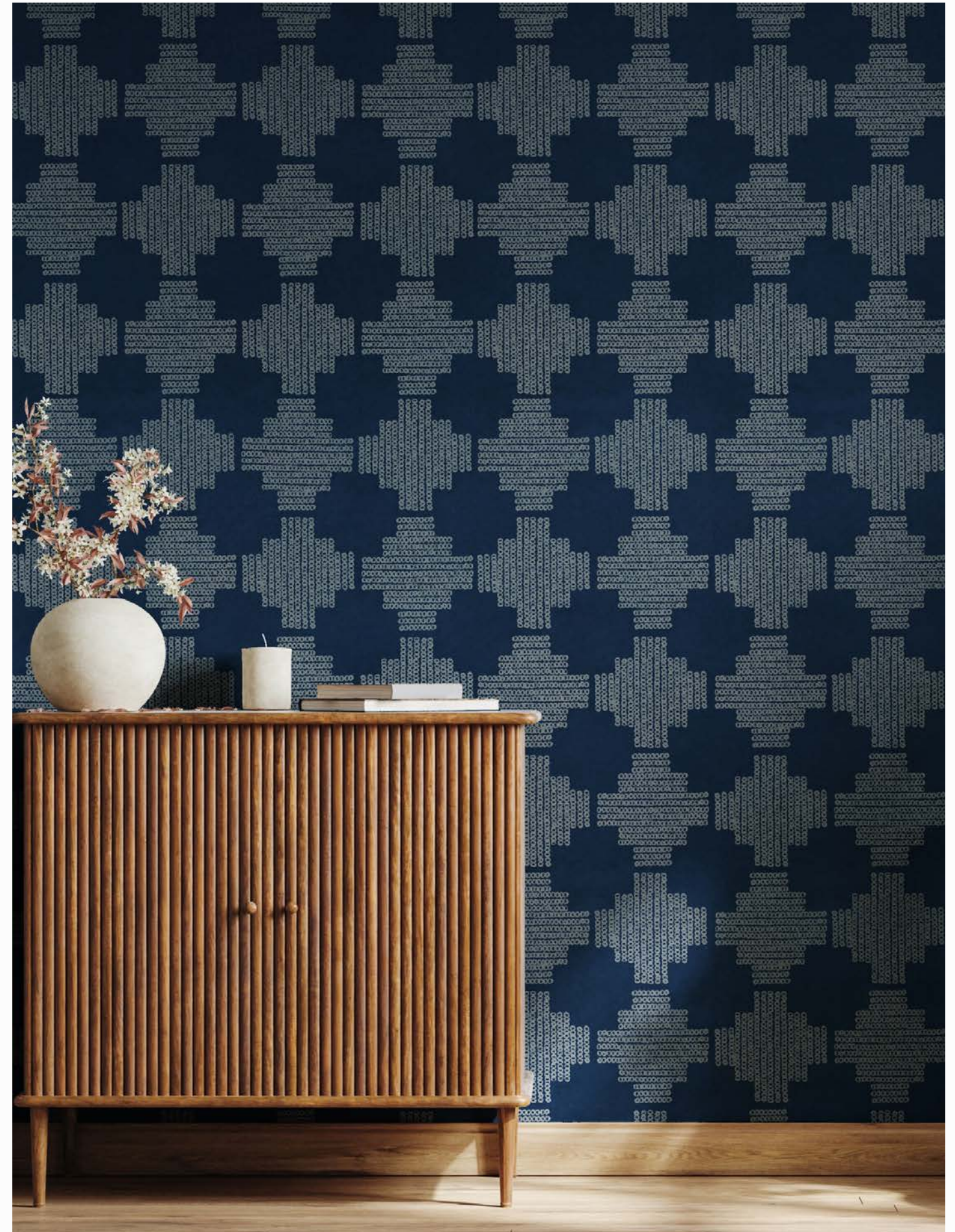
Translating the traditional bandhani tie-dye technique into a digitally-printed wallcovering, Surfside's motifs float serenely in a design inspired by the popular beach on the southern shore of Nantucket.

Sampled on FSC-certified clay-coated paper.

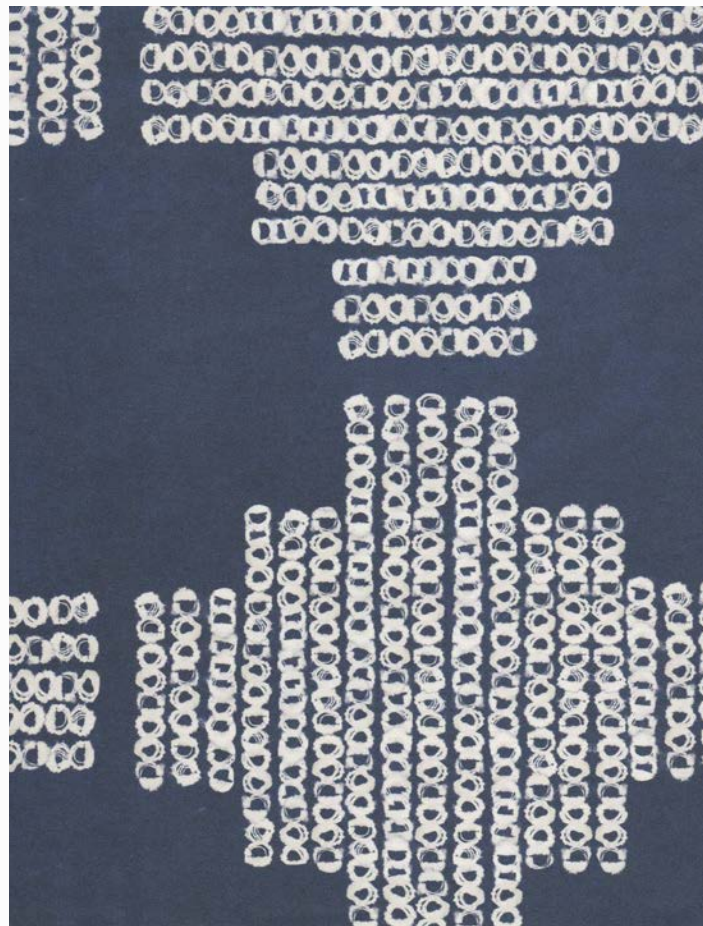


SUTRO

Width: 30" (Trims to 27")
Repeat: 27" H, 27" V
STANDARD CLAY COATED PAPER



SUTRO in Seaport Blue



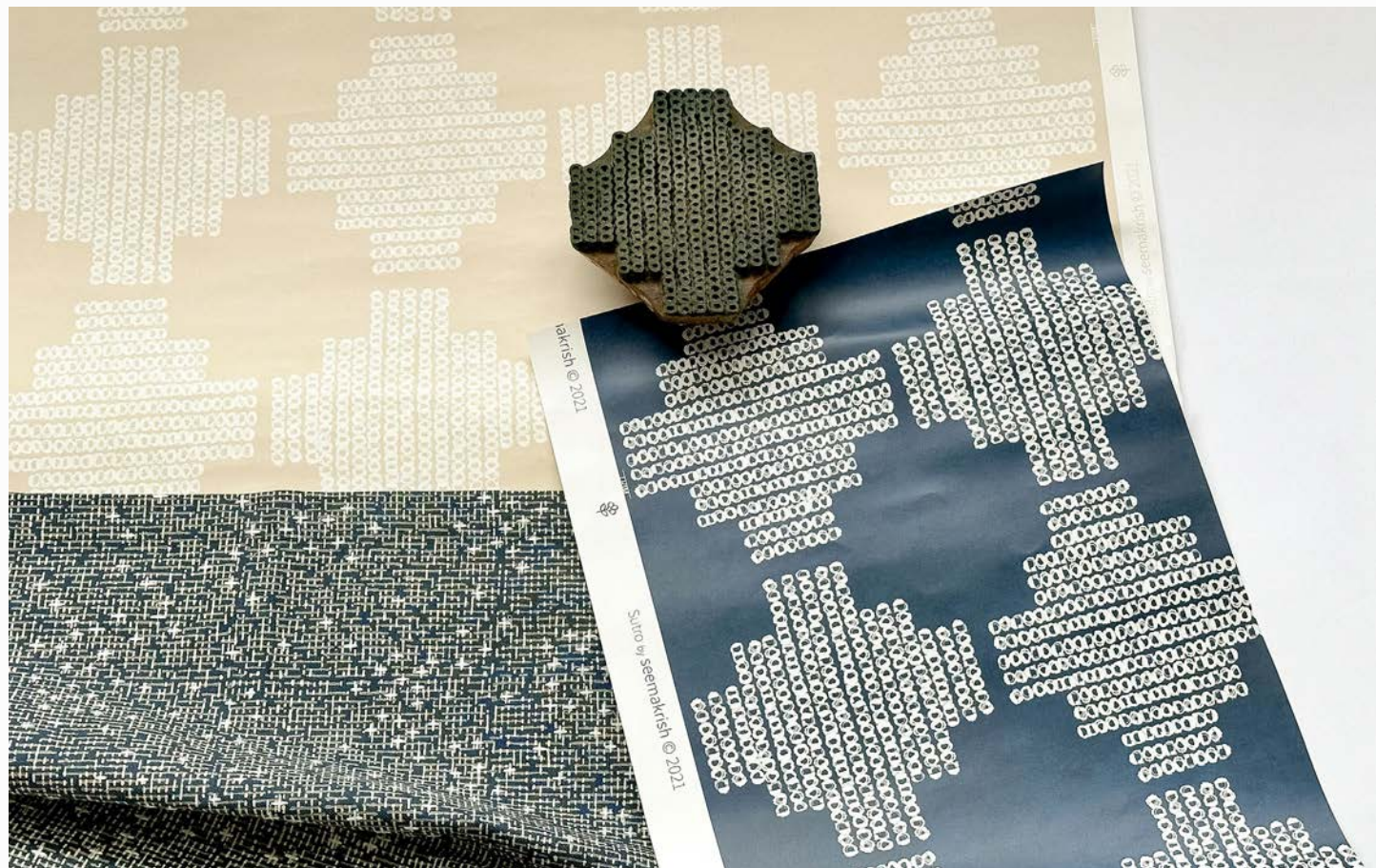
SKU# W 15-21 C

MARINE INDIGO



SKU# W 16-21 C

SAND



PACIFIC in Marine Indigo



SUTRO in Ginkgo Green I DESIGN by JEAN LIU DESIGN

Sutro is inspired by the ancient bandhani technique in which sections of cloth are bound together using tied thread and dyed by hand. Named for a historic landmark in the Lands End area of San Francisco, Sutro is a striking pattern that blends both traditional and modern sensibilities.

Sampled on FSC-certified clay-coated paper.



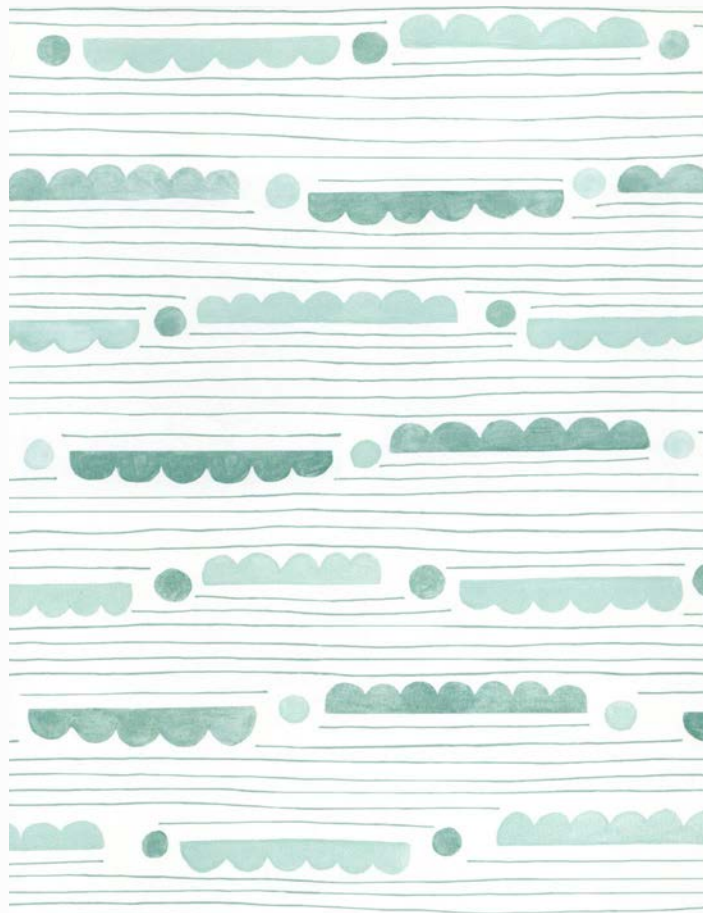


NANDI

Width: 30" (Trims to 27")
Repeat: 27" H, 29" V
STANDARD CLAY COATED PAPER

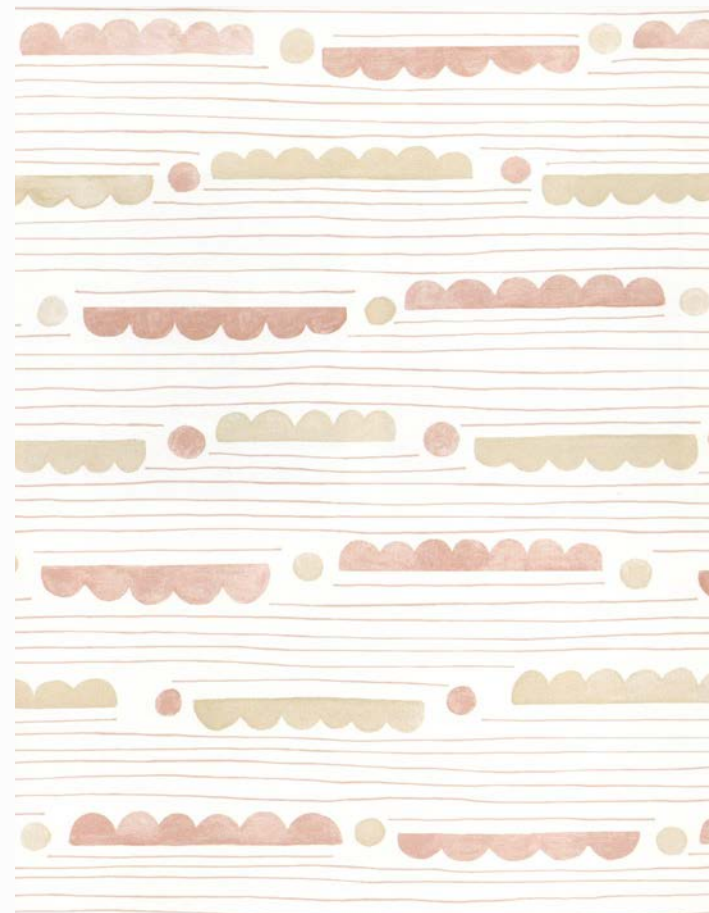


NANDI in Rain



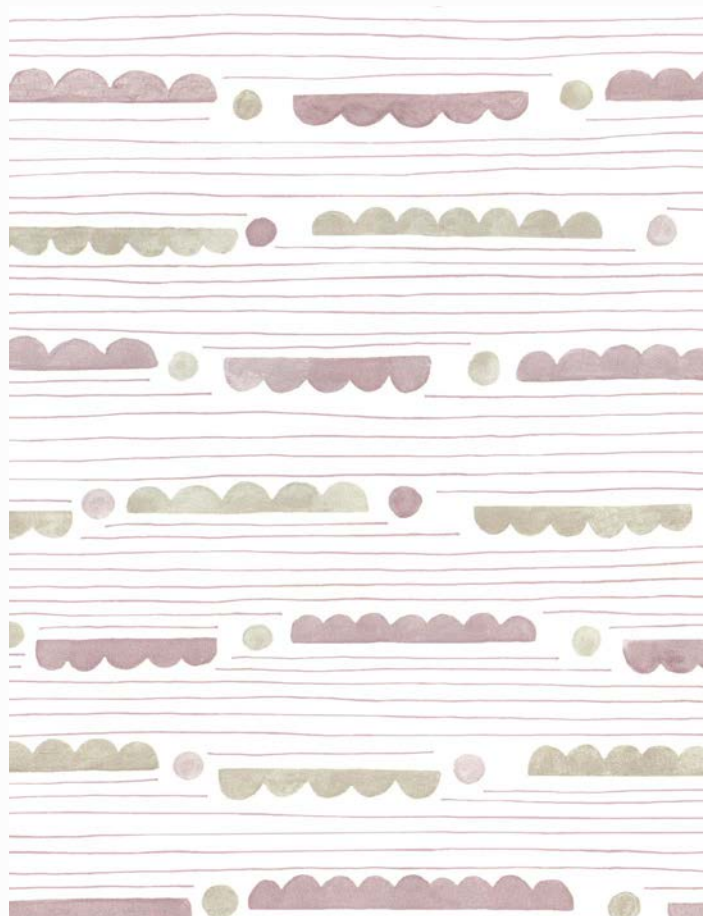
SKU# W 14-22 C

RAIN



SKU# W 13-22 C

ROSE PINK



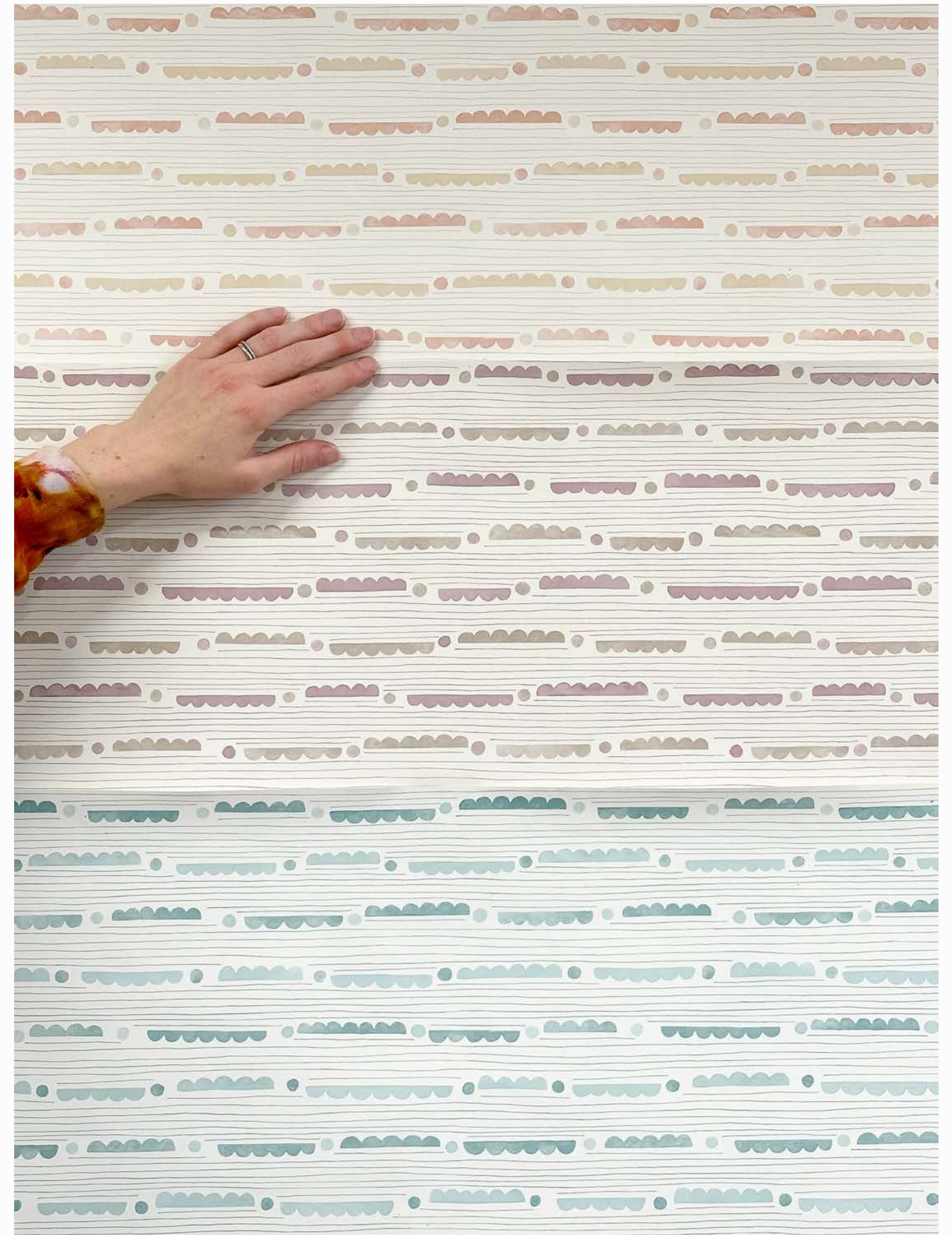
SKU# W 12-22 C

JACARANDA LILAC

Nandi Hills is an ancient hill station that offers sweeping views of Bangalore and houses a 9th century temple dedicated to Nandi – the bull ‘vahana’ or vehicle of the Hindu god Shiva.

Rendered with a watercolor effect, Nandi is a lively all-over stripe.

Sampled on FSC-certified clay-coated paper.





LALBAGH

Width: 30" (Trims to 27")
Repeat: 27" H, 51" V
STANDARD CLAY COATED



LALBAGH in Jacaranda Lilac



SKU# W 20-22 C

INDIGO



SKU# W 22-22 C

JACARANDA LILAC

Blooms, vines, and seed pods convene in Lalbagh, a delicate, watercolor all-over floral pattern named for a historic botanical garden in Bangalore crowned by an ornate 19th-century glass pavilion.

Lilac

1. **Lalbagh** wallcovering in Jacaranda Lilac 2. **Lalbagh** textile in Jacaranda Lilac 3. **Surfside** wallcovering in Lilac 4. **Central Park** textile in Grand Lilac 5. **Juhu** wallcovering in Brinjal Purple 6. **Breach Candy** textile in Anjeer Lilac 7. **Nandi** wallcovering in Jacaranda Lilac 8. **Tanjore** textile in Jacaranda Lilac



We imagine our wallcoverings being applied in various environments - traditional or contemporary, residential or commercial, and in different rooms- bedrooms, bathrooms, entry, kitchens, etc.

How do you imagine using our wallcoverings in your next project?





LALBAGH

Width: 36" (Trims to 33")
Repeat: 33" H, 62.35" V
PAPERWEAVE



LALBAGH in Neem Green



SKU# W 26-22 P

NEEM GREEN



SKU# W 23-22 P

ROSE PINK



SKU# W 25-22 P

COBBLESTONE

We sampled our Lalbagh pattern on our standard clay-coated paper and a textural paper weave ground. The scales vary as the widths of the papers vary.

We can sample any of our patterns on our five available substrates. We also have three additional grounds that are suitable for contract use.

Reach out to us to learn about our endless custom opportunities.





OUR WALLCOVERINGS

Wallcoverings are sold by the linear yard, untrimmed and packed in a continuous roll of up to 50 yards.

LEAD TIME -

Our wallcoverings are digitally printed to order in an effort to minimize waste from excess production. The lead time for wallcovering orders is 4 to 6 weeks. Rush orders with a 2 week lead time (excluding transit time) are available for an additional fee of \$325.

MINIMUMS -

The minimum order for wallcoverings is 5 yards. Orders under 15 yards are subject to a \$75 set-up fee.

CUSTOM -

We offer custom coloring and ground substitutions. Please contact us to learn more about minimums and lead times for custom projects.

COMMERCIAL PROJECTS -

Our wallcovering patterns can be printed on commercial-grade vinyl and environmentally-friendly alternatives such as Type II compliant scrim-backed smooth paper (available in multiple textures) and PVC-free non-wovens.

Please contact us to learn more about ground options, minimums, and lead times for commercial projects.

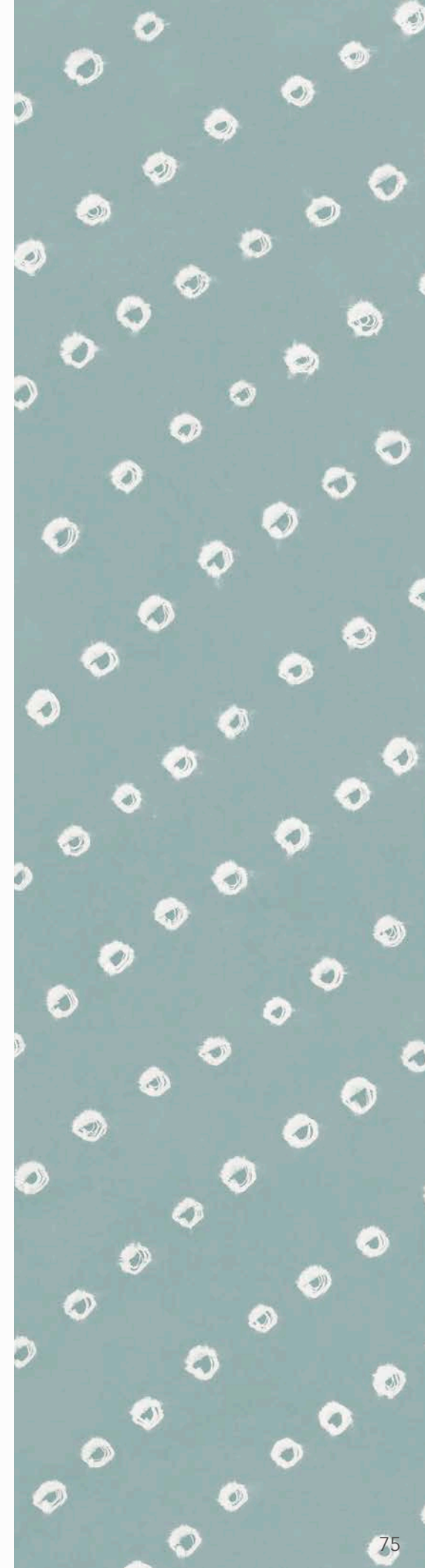
PRODUCT INFO

We use the following grounds for our wallcoverings. All measurements are for untrimmed yardage:

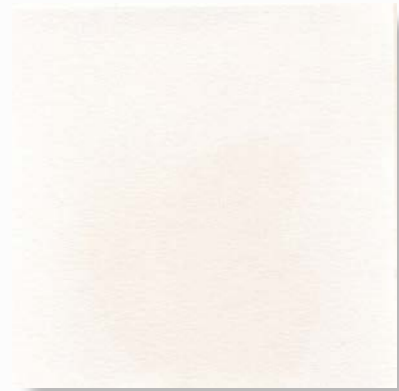
Sisal grasscloth	36" wide, untrimmed
Paperweave	36" wide, untrimmed
Non-woven vellum	30" wide, untrimmed
*Pearlescent paper	30" wide, untrimmed
Clay-coated paper	30" wide, untrimmed
Clay-coated paper	60" wide, untrimmed

All grounds are Class A Fire-rated based on the ASTM-E84 standard.

Please note ground substitutions are available for each of our wallcovering patterns.



WALLCOVERING SUBSTRATES



Standard Clay Coated Paper



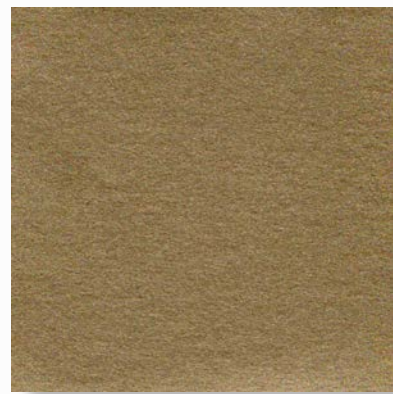
Non-woven Vellum



Paperweave

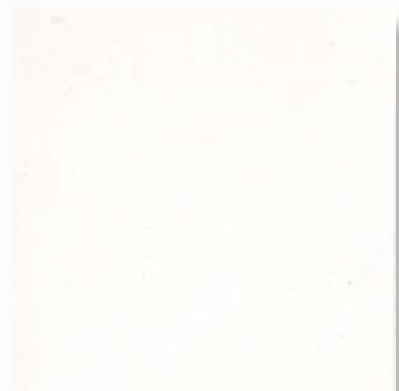


Sisal Grasscloth



Pearlescent Coated Paper

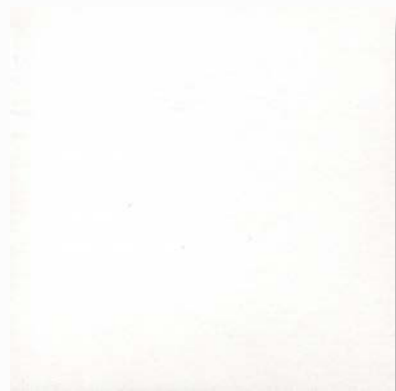
FOR COMMERCIAL APPLICATIONS



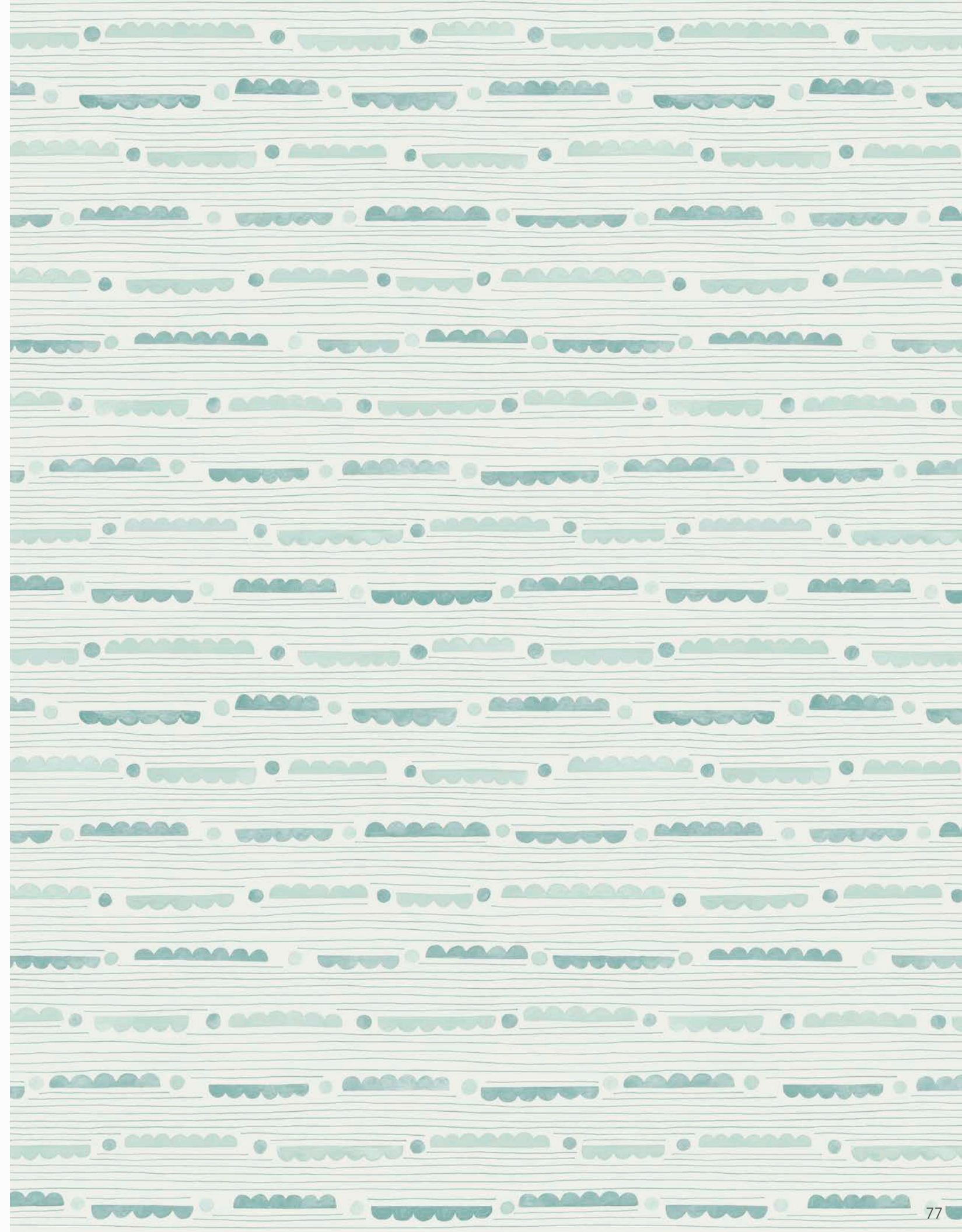
Non-PVC



Type II Vinyl



Eco-Friendly Vinyl



SHOWROOMS

ARIZONA
Deb Design Source
480.694.7597

MIAMI
Holland & Sherry
954.923.6656

ATLANTA
Paul +
404.261.1820

MICHIGAN
Cloth & Kind
734.800.4996

BOSTON
Studio 534
617.345.9900

NEW YORK
Holland & Sherry
877.631.0090

CHICAGO
Cloth & Kind
734.800.4996

SAN FRANCISCO
Holland & Sherry
415.552.2144

DALLAS
Holland & Sherry
469.249.6422

AUSTRALIA
Tigger Hall
0412.534.419

DENVER
Holland & Sherry
303.590.3292

LONDON
Nusom Collection
44.(0)20.3443.9747

HOUSTON
Holland & Sherry
713.357.2542

PARIS
Jules et Jim
33.(0)4.4226.3972

LOS ANGELES
Harbinger
310.858.6884

TORONTO
Y & Co
416.968.7700

seemakrish

185 Arkansas St., Studio B
San Francisco, CA 94107
info@seemakrish.com | 415.231.0335

Follow us @seemakrishdesign
Visit us at seemakrish.com