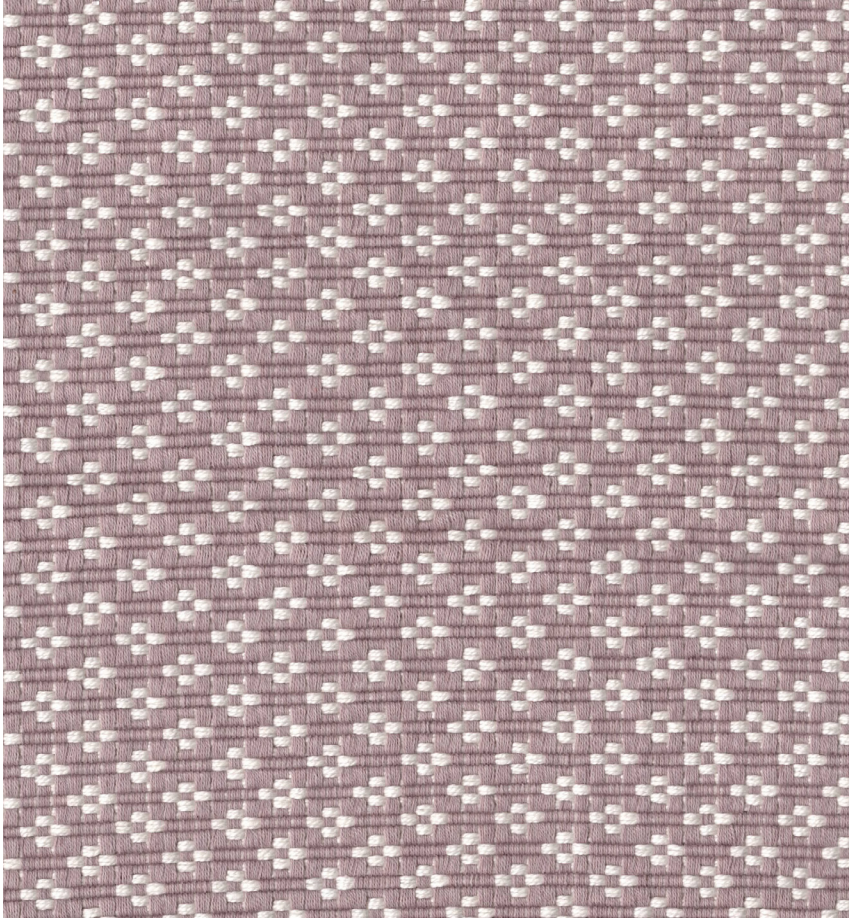


seemakrish



SANKEY

SKU# 2301/G

Color: Jacaranda Lilac

Content: 100% Cotton

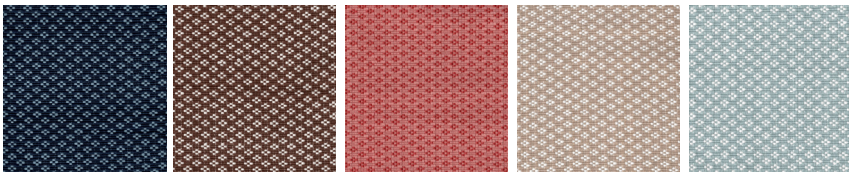
Width: 55"

Repeat: 0.6" V, 0.8" H

Care: Dry Clean Only

Woven in India.

This is a reversible textile and can be used on either side.



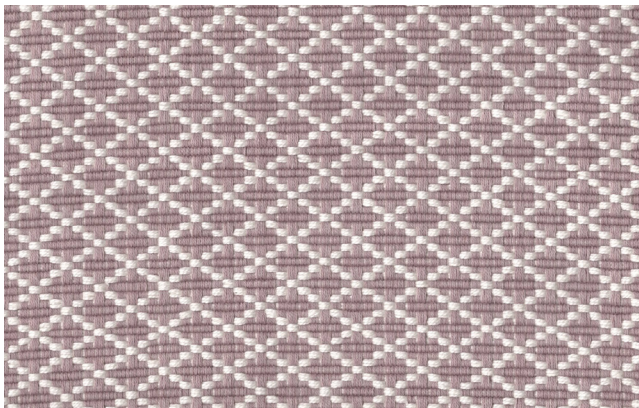
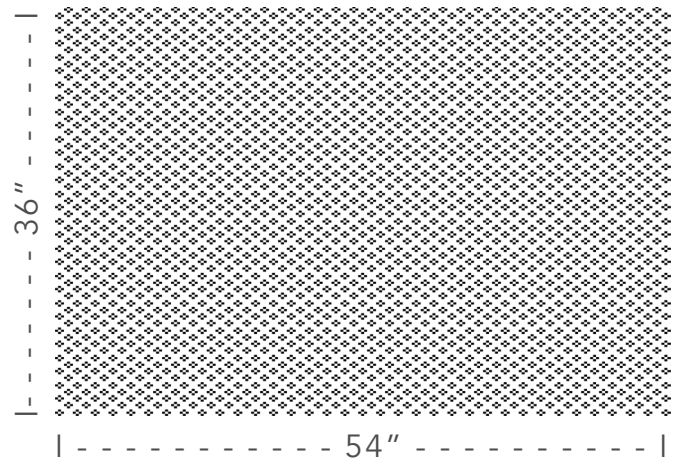
Indigo

Teak Brown

Terracotta

Clay

Rain



*Reverse side.